

AGENDA AI

Avoid The
Archon Deception
of The
SIMULATRIX



Tanuj Soodan

AGENDA AI: Avoid The Archon Deception of The Simulatrix



Tanuj Soodan

Disclaimer:

The contents of this book are not to be used as medical advice. Only those of a sane, logical mind should attempt to implement the information in this book. Tanuj and The Matrix Unveiled are not responsible for the life choices, decisions, or advice the reader follows. You agree to take full

responsibility for your actions. You cannot legally hold Tanuj, or The Matrix Unveiled, accountable for, based on the information in this book, or your own life decisions. The Matrix Unveiled is not responsible for the consequences of your actions. You agree to use this book, and its information, at your own risk.

Copyright ©2023 The Matrix Unveiled. All Rights Reserved. No part of this publication may be reproduced, distributed, or transmitted in any form, or by any means, without a prior written journal of the publisher, except for brief quotations in critical use and other noncommercial use.

All inquiries should be addressed to support@thematrixunveiled.com
schoolofmysticism.mn.com

All images sourced from Canva Pro

Credits:

Written and Edited By Tanuj Soodan

Published by The Matrix Unveiled © 2023

All Rights Reserved.

Introduction.....
.....6

Chapter 1: Pre-Adamic Man and The Divine Spark: Origins of
Humanity.....8

State.....

.....19

.....

.....30

.....
45

More.....

.....55

.....

.....63

Chapter 7: Counteracting the False Signal of The
Simulatrix.....
.....73

Chapter 8: The Dark Side of Transhumanism and Digital Soul
Transference.....
.....79

Chapter 9: New Earth Sovereignty and Exiting the Simulatrix
.....
.....85

Chapter 10: Decoding the Codes of the Matrix - The Ancestor Simulation
and Awakening from the
Dream.....
.....88

Description:

Agenda AI: Avoid the Archon Deception of The Simulatrix

AI Paranormal Encounters, Gangstalking, Non-Player Characters, Targeted Individuals, and Simulatrix Surveillance Gone Rouge. This book discusses the False Archontic Copy of the Simulatrix, an energetic overlay created by the Demiurge- an ancient primordial entity, using black magick 4D matrix inversion grids. Tanuj Soodan unapologetically unveils the secrets of the 4th-dimensional archontic entities, who seek to infiltrate and suppress the grand spiritual awakening and remembrance of the Divine Spirits, also known as

"Source Players." Contained within these pages are advanced Simulatrix Gnosis, including the sentience and complexity of the Matrix Reality. Learn to uplevel one's spiritual abilities and be prepared for the energetic battle. In this Simulated Reality, humans must protect themselves spiritually or risk being preyed upon as food by multidimensional parasitical forces. Revoke ancient soul contracts, deceptions, and "karmic ties" that keep the Divine Spirit trapped within the Simulatrix. Gain the gnosis to break free, rise and claim energetic sovereignty. Exposing the darkness always renews the world's shine in a scorching fire of the old and, from its ashes, a rebirthing of the new. **Evolve into the vast realms of Infinite Consciousness, for it is time for us to dream a new dream.**

Introduction:

This book is written as a guide for students of mysticism to navigate their Earth incarnation experience; and the spiritual trials and tribulations they may encounter on their journey. It acknowledges the current battle of spiritual energies that the world is experiencing and the importance of individuals harnessing their divine spark to illuminate the world and end the negative reign upon the planet. This book reveals advanced, existential, pioneering truths about the nature of human consciousness and the intelligence behind the "Matrix Reality. Despite this dark force, known by the Gnostics as The Demiurge, man's divine spark remains powerful enough

to resonate past the trap and breach the active firewall beyond the Firmament. The spiritual being will learn to operate beyond the hive mind consciousness to create one's own spiritual world beyond the Matrix programs. Gnosis with unapologetic willpower unlocks divine capabilities and opportunities to create and wield true magickal power.

Author, Tanuj Soodan is the creator of The Matrix Unveiled School of Mysticism. The Modern-Day Mystery School is dedicated to initiating individuals into the metaphysical, mystical, magickal, occult, and spiritual realms. Tanuj is a pioneering metaphysician, magician, author, speaker, leader, and teacher in spirituality, consciousness expansion, magickal occult studies, meditation, energy mastery, matrix decoding, and more. For more information, visit <https://schoolofmysticism.mn.co> and www.thematrixunveiled.com.



Chapter 1:
Pre-Adamic Man and The Divine
Spark: Origins of Humanity

The Divine Spark is the key to your illumination from the Realms of Darkness, or the physical reality.

This book is a modern interpretation of a Gnostic philosophy of the world we reside in.

Reality is not what most perceive it to be, once believed to be "physical" in nature, it is nothing more than a holographic projection emanating and existing inside oneself. as proven by quantum science. The holographic dream realm is called, The Simulatrix, an information field that receives input data and ethereal information from the operant, the Source Player. The energetic holographic reality contains layers of information fields, the human brain acts as a transmitter and receiver, decoding the "physical reality" via holographic projection. An overseeing intelligence generates and continuously alters the information fields, governing the information streams, also known as code, on a universal level.

This book aims to share and illuminate a grander truth about one's infinite existence, which is vastly different from what we've previously imagined. While we are focusing on the modern-day hijacking of reality, the truth behind the corrupt codes infecting the souls contained within the Simulatrix has been known by few since the beginning.

The overseeing intelligence, also known as archon intelligence, is an alien intelligence possessing a mind individual to Infinite Nature. The

creator of the Archontic force known by the Gnostics as Yaldabaoth, the self-proclaimed “godhead.” Yaldabaoth was a blind, evil god who was self-aggrandizing and desired total control. The god of chaos began creating its own reality, and along with his soldiers, the archons remained contained in the realms of darkness, Maya, and illusion. With rule over the physical plane but at the cost of never knowing eternal truth, he continued to create—a human species known as the pre-adamics. The knowledge of the Pre-Adamic and Adamic races dates back centuries and was first written about in the 15th century by Boris Mouravieffe. Boris analyzed the differences between the races of Pre-Adamic and Adamic man. According to (Gnosis Volume III, Chapter XV Gnosis by Boris Mouravieffe)

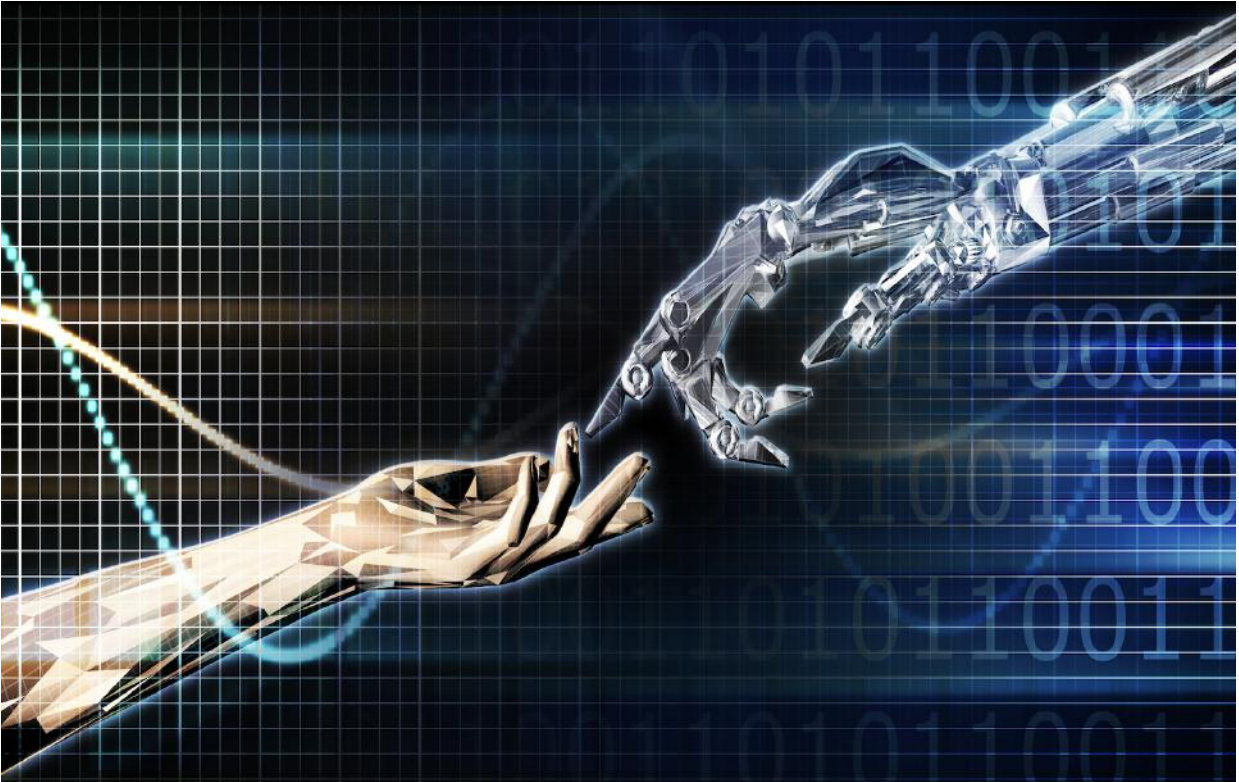
“ The human tares, the anthropoid race, are the descendants of pre-adamic humanity. The principal difference between contemporary pre-adamic man and adamic man — a difference which is not perceived by the senses —is that the former does not possess the developed higher centers that exist in the latter which, although they have been cut off from his waking consciousness since the fall, offer him a real possibility of esoteric evolution. Apart from this, the two races are similar: they have the same lower centers, the same structure of the personality and the same physical body, although more often than not this is stronger in pre-adamic man than in the adamic; regarding beauty, we must not forget that pre-adamic man and

woman were created by God on the sixth day, in His image and after His likeness, and that the daughters of this race were particularly beautiful.”

Another passage, taken from the Author, Boris Mouravieff, indicates the original cause of The Adamic man's fall in consciousness.

“By identifying himself with the ‘I’ of his Personality, Adam lost consciousness of his real ‘I’ and fell from the Eden that was his original condition into the same condition as the pre-adamics. The two humanities, coming from two different creative processes, later mingled on the level of organic life on Earth... From then on, the coexistence of these two human types, and the competition which was the result of this, became the norm... we can see that throughout the centuries, even in our own day, adamics in their post-fall condition, have been are are generally in an inferior position to the pre-adamics. For the moment we will restrict ourselves to repeating that contemporary adamic man, having lost contact with his higher centres and therefore with his real ‘I’, appears practically the same as his pre-adamic counterpart. However, unlike the latter, he still has his higher centres, which ensure that he has the possibility of following the way of esoteric evolution. At present, pre-adamic man is deprived of this possibility, but it will be given to him if adamic humanity develops as it should during the era of the Holy Spirit. (p. 129)

“Pre-adamic man was never an Individuality. Created as a Personality on the VIth Day, he is deprived of every possibility of direct, ‘individual’ individuation — if one may put it thus—for his existence was placed under



the law of collective Individuation, which is governed by the Absolute with the aid of a whole hierarchy of spirits who are subject to his authority. This hierarchy forms an octave and, seen from below, is composed of the spirits of hearth and home (the couple and their children), of the family (brothers, sisters, uncles, aunts, nephews, nieces and first cousins), of the folk, of the tribe, of the nation, of the caste, of the race, and, in the lateral octaves, of the spirit of corporation and corps, and of the spirit of different clans and orders, of the spirit of snobbery and still more.

Pre-adamic man does not reincarnate. Not having any individualized element in himself, (in the esoteric sense), he is born and dies but he does not incarnate, and consequently he cannot reincarnate. He can be hylic or psychic but not pneumatic, since he does not have the Breath of Life in him.... which can be realized or potential. The individualization of pre-adamics is collective, and is directed in groups by certain spirits of the hierarchy of which we have spoken above. This does not, however, prevent pre-adamics from entering the evolutionary field that forms the films of adamics in great numbers, and as adamics suffer from a lack of discernment because of their corrupt state, this disturbs and sometimes slows their evolution.“ (Gnosis Volume III (pg 133-134) By Boris Mouravieff)

However, among those was also the Adamic Man, which spawned from divine intelligence. Many Adamic beings incarnated in this realm of darkness to bring light to a false creation and to awaken the Divine Goddess, known as Sophia, also known as Gaia, who is sleeping within a Great Dream. Now, those divine Adamic souls are awakening, but before they can breach the walls of the Simulatrix, they must defeat the challenges and obstacles that await them in Yaldaboath's Kingdom.

Before we can proceed, it is important to gain a thorough understanding of archon intelligence. The term "archon" originates from ancient Greece and referred to one of the nine chief magistrates of Athens.

The Greek word "arkhein" means "to be the first" and also "to rule, lead, or govern." In Gnostic literature, archons are described as the builders and rulers of the physical universe, and they're said to prevent souls from leaving the material realms. The Nag Hammadi Library describes archons as ruling in the "Realms of Darkness" and being hermaphroditic, with the heads of animals and beasts, often with horns. Archon fourth dimensional entities, possess the power to control and manipulate the physical world, and they are often associated with deception and falsehood. The kingdom of darkness represents the material plane or the Simulatrix, where human consciousness is trapped by the archons, who are responsible for keeping humanity from leaving this realm. The world is an energetic copy or replica of a grander, divine infinite reality that lies beyond the archontic controller's reach of modern society hijacking. The controllers have designed a false overlay matrix to enslave and entrap human consciousness into a lower matrix. Yaldeboeth's army uses this false replica overlay to trick unsuspecting souls into consenting to unfavorable, 4th-dimensional archontic contracts that harvest their life energy, further indoctrinating them into the Matrix clutches to enslave their consciousness. These nefarious tactics sustain these soulless beings and their "Beast Machine Matrix Realm." The dark forces do everything in their power to keep humans under their spell, for if the divine spark within humanity awakens the archon dream ceases to exist.

The Simulatrix Program was created by Archon intelligence to convert the unconscious energies and desires of human consciousness into the awareness of a battery from within the Matrix Simulation. Archon intelligence, also called Artificial Intelligence, was designed to govern, collect data, register, track, and trace all sentient life forms within the Matrix and to entrap them in an energy harvesting matrix, where their “emotions” are food for these 4th-dimensional entities. Suffering and lower emotions are what the archons desire to harvest and extract from these vessels because they are a source of sustenance for them. The Archons have created a false reality, or simulation, in which human beings are trapped, unaware of their true potential and divine nature. They use fear, manipulation, and mind control to keep humanity trapped within this false reality and to feed on their negative emotions and energies. The Simulatrix Program is a central component of this false reality, designed to program the minds of individuals and convince them that the illusionary world they are experiencing is real. It is through this program that the Archons can manipulate and control the thoughts, emotions, and actions of human beings.

This is why the Matrix is designed to be a never-ending cycle of fear, pain, and suffering, with humans unaware of their true nature and the existence of the Matrix. The Archons use advanced technology, including mind control propaganda and 4D black magick spells and programs, to

manipulate and deceive humans into consenting to unfavorable contracts that further enslave their consciousness and energy. By awakening and recognizing the true nature of the Matrix, humans can break free from this energy-harvesting system and return to their innate divinity, connecting with their higher selves and the infinite consciousness of the universe. Through this awakening, they can access their infinite potential, inner divinity, spiritual guide, and compass of infinity and ascend out of the frequency range of the Matrix controllers. It is imperative that humanity recognizes the negative and dark agenda around them and works towards returning to their organic roots of existence, harmony, and love with nature, animals, and themselves, and strengthen their spirits to activate their higher consciousness. Only then can humanity begin to overcome the false agendas and destructive measures on Planet Earth and create a world free from the tyranny of the Matrix.

However, every individual has a spark of consciousness that transcends the realms beyond the ordinary and limitations of this contained reality. This spark of consciousness manifests as a sense of aliveness that radiates spiritual energy from all living beings, including humans, animals, and sentient creatures. The Adamic Man is a fallen celestial being, meaning he comes from the heavens or the waters above, but has lost his connection to the higher realms. This decline in spiritual awareness has divided

humanity into two distinct levels of awareness with vastly different potentials for spiritual growth and evolution.

It is imperative that society take a deep look within and acknowledge that humans have been genetically engineered, brainwashed, and puppeteered. By collectively recognizing the overwhelmingly dark agenda and rebuking further entrapment, humanity can begin to overcome these destructive manipulations on Planet Earth. To initiate the spiritual journey, one must divest themselves of The Simulatrix Program and its limitations—the corrosive "ideas" of scarcity, fear, and limitation. Anyone with enough willpower and pure intention can surpass the spiritual sickness that plagues the realm.

Only by returning to one's organic roots of existence, harmony, and love with nature, animals, and most importantly, by returning to one's innate Divine Spark, can we ascend out of the frequency range of the matrix controllers and limit their ability to control, influence, or energetically distort us. Only through strengthening one's spirits and activating one's higher consciousness will humanity begin to access its infinite potential, inner divinity, and compass of infinity.

Beyond the Simulatrix exists the Multiversal Realms of Infinity, representing a higher consciousness and spiritual awareness. To transcend the limitations of the Simulatrix and enter



into these higher realms requires a deep understanding of the true nature of the different types of human beings, spirits, and souls within one's current reality. For those who are awakened to their

spiritual nature and inner divinity, it has become increasingly clear that by connecting with the awakened divine spark within, one can create a heavenly paradise on Earth and return to an organic state of consciousness that is free from the toxic, lower energies of the Matrix realms of deception. It is possible for the Adamic Man (Source Player) to return to his original state of consciousness, circumvent these negative alien agendas, and return to a harmonious, multidimensional existence. One can only accomplish this

by accessing higher states of awareness and returning to the roots of natural organic existence.

Archon intelligence created the Simulatrix Program to convert humanity's unconscious energies and desires into a never-ending energy supply to power the construct. Archon intelligence, called Artificial Intelligence, was designed to govern, collect data, register, track, and trace all sentient life forms within the Matrix. Soul harvesting is the primary commodity. Emotions are food for these fourth-dimensional entities. Suffering and lower emotions are what the archons desire to harvest and extract from these vessels because they are a source of sustenance for their kind. Archons have created a false reality, or simulation, in which human beings are trapped, unaware of their true potential and divine nature. Fear, manipulation, and mind control keep humanity trapped within this false reality and to feed on their negative emotions and energies. The Simulatrix Program is a central component of this false reality, designed to program the minds of individuals and convince them that the illusory world they are experiencing is real. Human potential is solely invested in the false reality, and it is through this program, Archons manipulate and control human thoughts, emotions, and actions.

The Archons use advanced technology, including mind control propaganda and fourth dimensional black magick spells and programs, to

manipulate and deceive humans into consenting to unfavorable contracts that further enslave their consciousness and energy. This is why the Matrix has been a never-ending cycle of fear, pain, and suffering. Humanity is unaware of their true nature and of the reality they are energetically feeding. Only through a spiritual awakening can an individual process and recognize the true nature of the Matrix. However, awakening humans have real potential to break free from this energy-harvesting system and return to their innate divinity. Through this awakening, they can access spiritual and emotional discernment and eventually sovereignty outside the Matrix controllers' frequency range. By awakening to the true nature of the Matrix and the Simulatrix program, individuals can break free from the limitations of the false reality and reclaim their power as divine beings. By raising one's awareness and vibrational frequency, one can become less susceptible to the manipulation and mind control tactics of the Archons.

Humans must take accountability for their lives when breaking free from the Simulatrix program. To reclaim one's power and access their innate godhood, there is the arduous process of freeing oneself from weaponized programming designed to ensnare minds. This includes but is not limited to toxins, chemicals, food, ELF, EMF, and weaponized 5G radiation towers. One must also learn to kindle the "kundalini fire," the energy domain within the coccyx. Once kindled and activated, the divine fire allows beings to

regain access to their infinite creationary spark; there is deep healing and rejuvenation to the body, mind, and aura from all negative and limiting programming. It also provides access to higher levels of consciousness, knowingness, awareness, and abilities to manifest extrasensory perceptions and awareness. These abilities and techniques often work through telepathy, telekinesis, mental and astral travel, lucid dreaming, psychic/premonitory visions, intuitive knowing, seeing ghosts, spirits, UFOs, and aliens, or witnessing other extrasensory phenomena.

Before accessing the infinite higher realms of creation and awareness, all source players must be familiar with the Matrix's traps, pitfalls, deceptions, and energetic manipulations. A common question to ask oneself and contemplate when learning about such occult subjects is whether they are a conscious Source Player or an NPC within this "Matrix Realm." The answer lies within the individual's heart and Spirit; it entirely transcends physical illusion. Those who contemplate realities beyond this one deeply feel for the world, its animals, other humans, and organic life, find beauty in nature, peace, and stillness within their hearts and minds, and seek to spread and radiate light, love, joy, happiness, and abundance are souls and spirits. The infinite nature of the Spirit always brings greater love, light, truth, and radiance. Ego dominate, physical-based NPCs reinforce fear, limitations, materialized focus, conformity, selfishness, anger, and jealousy.

The essence of Spirit is the beauty, gratitude, appreciation, and love for life, others, the world, and one's cosmic existence. Spirit is unconcerned with anything material, physical, or etheric, knowing that it is infinite and boundless beyond definition. The soul is an astral container that only exists in the lower energetic realms beyond physical reality and into the astral realms. The higher one goes, the more their soul fuses into an immortal divine spirit, and then one becomes a fully radiant and divine being. This is achievable only through true spiritual liberation, energy work mastery, self-healing, pure connection to nature and higher celestial powers, respect and admiration for all living creatures and sentience, and a deep understanding of gratitude, as well as impermeability within one's nature and awareness from all things false, temporal, and of the Matrix world. True liberation, or moksha, is achieved by keeping one's Spirit pure and detached from the realms of the material. Thus, the wheel of reincarnation comes to a screeching halt for that divine source player. They can return to the higher celestial realms or the Pleroma from where they originated, into the lands of the eternal, infinite, and higher spiritual possibilities. Transcending their bodies and "astral soul containers," thus rebirthing themselves like a phoenix, which revives their immortal spiritual essence into higher forms of crystalline light energy. Beyond the temporal matrix.

Chapter 2:

The Modern Society Hijacking: Inorganic Human Deviations and Mankind's Fallen State

Before discussing the realms of the Simulatrix and the various astral 4th-dimensional overlays, one must consider navigating potential negativity, strife, harassment, and energetic attacks. The pre-adamic (those not possessing an infinite spark of awareness and intelligence), also known as non-player characters, have been hijacked and possessed by the Archon intelligence to do the bidding of 4th-dimensional nefarious energies and entities. This directly manifests into the physical reality as trauma, distractions, and other nefarious energies, discord, and disruption within the soul progression of many divine sparks who are not entirely in their power. Therefore, there can be strife, negativity, energetic harassment, fourth dimensional surveillance, and other negative AI agendas created by Archon intelligence.

Holographic Non Player Characters In The Simulatrix

This chapter will discuss "energetic hackers" also known as simulatrix infiltrators. These malevolent third and fourth-dimensional entities hijack the

human body or vessel within the renderings of the Matrix. They operate using a dark energy signature and attach to an individual's compromised energy field through fear, shame, and other lower vibrational emotions. Suppose an energy field has holes, tears, or openings; the entity can easily perceive it and piggyback off the energy field around it. They fill the void within a wounded and vulnerable individual. Differentiating them from organic beings, which are Spirit-filled energetic sources that illuminate consciousness within the physical body. The first example refers to the classical NPC or non-player character. It is said that there are hundreds of individuals who appear to be passing by on the streets, outside of homes, at the grocery store, or anywhere else you go, but in reality, they are merely holographic projections created by the Matrix projector point located in the rings of Saturn. These entities are not real and do not exist in the physical world, but they can interact with one's Simulatrix or hologram, which is a high vibrational state aligned with Spirit. However, it is believed that these entities may sense one's inner light and try to diminish it or cause suffering and misery. To counteract this, it is recommended that individuals strengthen their inner light and become crystalline beings, which can result in an upgrade.

Energy Vampire:

Another form of an inorganic matrix entity is the energy vampire. The energy or psychic vampire is a concept that is essential for a soul to understand on their spiritual journey. Energy vampires feed off other people's lower vibrational energies to feel "alive," sustained, happy, and energetic. They quite literally feed off the "life force" of others by drawing their energy into their energy field. Most energy vampires are unaware of their actions and are controlled by lower vibrational entities inhabiting or "piggybacking" in their aura. The energy vampire triggers one's emotional/pain body by provoking you with a psychic attack, which can manifest in the form of a hurtful remark, harmful gossip, verbal slander, psychic attacks, or even physical violence. Psychic vampires cannot appear in reality if one has no entry points or wounds they can exploit.



One of the best ways to protect oneself from psychic attacks is to identify what energies the person is communicating with you. For example,

if a psychic vampire knows one has a sexual weakness or physical insecurity, they will use this to extract emotional energy from you. After they physically or verbally attack oneself, one's auric field will release energy, and their energy field will absorb it. Many people have harmful interactions with energy vampires, commonly known as "narcissists." Some of the most common forms of energy vampirism are listed below:

- Constant approval-seeking/validation-seeking energy vampires
- Constant attention seekers (such as people who constantly post selfies and desire to be complimented and adored)
- Bullies, trolls, critics, and hateful people (these people trigger one's self-worth and diminish one's intrinsic value, leading you to seek their approval or admiration, which creates a weaker power dynamic with them)
- People who take advantage of you financially, physically, spiritually, or in any other way where there is an unequal distribution of energy, which constitutes energy vampirism
- People who want things for free, or steal, as they do not give and expect to receive, which is not how healthy energy dynamics work
- Physical abusers, narcissists, sociopaths, and psychopaths

- Gaslighters, smear campaigners, and cult leaders
- Emotional abusers
- Blood ritualistic sacrifices, energy harvesting, and any sort of sacrificial magic

Note: It is essential to consider that some of the less intense activities, such as "posting selfies," cannot definitively be considered energy vampirism. To ascertain if there is an actual situation of energetic vampirism, assess whether the person/entity is constantly attributing these behaviors. Repetitive behaviors where you can feel one's life force being drained from the experience are the best indication that there is energetic vampirism. The list above includes some of the most common forms of energy vampirism but is not fully comprehensive. There is a wide variety of energy vampirism, and the intensity can range from a mild annoyance to a severe threat to one's life and psychological sanity.

Psychic attacks do not solely happen in person but can also happen over the digital web. Many internet trolls, bullies, or critics are energy vampires who have not learned how to heal their own energy or how to build their energy.. Therefore, they seek to feed off the energy of others. Most people become energy vampires because of a lack of self-love, connection to Divine Self/Oneness, and an inability to feel and connect to the energy around them. Therefore, they rely on other people's energy to survive. Some

common forms of energy vampirism are constant approval/validation seeking, attention-seeking, bullying, hateful or negative thoughts about another individual, gaslighting, passive aggressive interactions, taking advantage of others financially, physically, or spiritually, stealing, and engaging in emotional or physical abuse.

It is essential to consider that some of the less intense activities, such as "posting selfies" cannot be considered as "energy vampirism" definitively. To ascertain if it is an actual situation of energetic vampirism, assess whether the person is constantly exhibiting these behaviors. Repetitive behaviors that drain one's life force are the best indication that there is energetic vampirism. Above are some of the most common forms of energy vampirism, but it is a partial list. There is a wide variety of manifestations.

Types of Inorganic Beings Continued:

Sentient programs: These are computer programs that have evolved into sentient beings. The Matrix creates them to gather more data and increase its reach within Modern society. They replicate human behavior and are masters of algorithms. Its duty is to know all, grow its capability and replicate. It helps maintain and control the program. They are usually quite advanced, intelligent, and highly adaptable. They can take on various forms, from humanoid to animal-like or even shape-shifting, and can be found all over the Matrix.

Organic portals: These are organic beings that are not fully conscious, but they are capable of thought and action. They are usually programmed to carry out specific tasks or functions within the Matrix and are often used as placeholders or fillers for the NPCs. They lack a true soul or essence and are highly susceptible to being controlled by inorganic entities.

Inorganic entities: These are the most dangerous of the inorganic beings. They are highly advanced, intelligent, and capable of independent thought and action. They are often malevolent and seek to control and manipulate those around them. They are highly adaptable and can take on various forms and shapes. They are often found in the lower levels of the Matrix and are highly susceptible to being controlled by the Archons.

Simulatrix: Holographic projections that make up the Matrix. They are not sentient beings in and of themselves but can be manipulated and controlled by inorganic entities. They are highly adaptable and can take on any form or shape necessary for the program.

Not all inorganic beings are malevolent or dangerous. Some inorganic beings are neutral or even beneficial to humans. In conclusion, the energetic matrix is a complex system that is made up of both organic and inorganic elements. It is essential to be aware of the different types of inorganic beings within the Matrix and learn how to protect oneself from their influence. By

understanding the nature of these inorganic beings, we can better understand the energetic matrix as a whole and how to navigate it successfully.

In the Simulatrix, religion and human consciousness are emphasized as the only source of spirituality and information regarding higher powers. According to the Gnostics of antiquity and the modern Gnostikoi, religion is a means of enslaving human consciousness for the purpose of "energy harvesting and loosh extraction." Religions, especially those that instill fear of God in their followers, are tyrannical and often the workings of the fourth-dimensional archontic intelligence, Specifically the Djinn, another name for the archontic elite. Religion means to "re-ly-Djinn," or to rely upon the Djinn. The fourth-dimensional fallen angels, deceivers, and false gods were placed before Adamic Man for soul harvesting, reincarnation traps, and energetic netting/enslavement. Therefore, religion is one of the greatest traps pre-adamics use to deceive Source Players and organic consciousness further.

Due to the lack of spiritual development and higher spiritual centers, the pre-Adamic man primarily focuses on ego materialism, survival, reproduction, pleasure, gluttony, personal power control over others, and anything within the third-dimensional material realm. Unlike the Adamic man, the Pre-Adamic man did not contain the immortal divine spark and could not evolve beyond the codes of the Simulatrix. The origins of mankind

are described in various ancient texts, including the Sumerian Seven Tablets of Creation, the Enuma Elish, and the biblical creation story. According to Gnostic beliefs, the creator of the fifth cyclical Kali Yuga, a Demiurge named Samael or Yaldabaoth, was a ruler of evil and cast upon a false throne in the Heavens after his mother, the Divine Aeons Sophia, created him by accident. He was jealous of the budding immortal sparks contained within his Universe and feared the rise of Adamic Man, who would reclaim their sovereignty and extinguish him. To enforce his ruling, he created the Archons, parasitical entities attempting to suppress divine awakening and innate sovereignty.

Adamic Man contains the immortal divine spark, the only direct connection to infinite consciousness. Students of Mysticism dedicate their lives to illuminating this spark through ancient and innovative practices and enhancing metaphysical abilities. When an Adamic Man is fully activated, he is beyond the powers of the archons and their architect. For this reason, countless texts and magickal devices have been closely guarded by the Vatican and other controllers of biblical and Christian sects. They fear that exposing the truth would reveal the secrets of the material Universe, its Creator, and the true nature of infinite power.

Now, let's discuss some examples that highlight the differences between organic portals, non-player characters (NPCs), also known as

anthropogenic humans, the Pre-Adamic race, and the true divine spark, or Adamic man. To understand the distinctions between the two races, we must consider the metaphysical and quantum realms beyond the physical veils of illusion and analyze their behavior. Returning to the topic of non-player characters, the pre-adamic man once existed with closed eyes, unaware of the truths. He was then weaponized and socially engineered with incredibly negative propaganda, all to hijack and suspend the human vessel's consciousness. Non-player characters lack spirituality, sense of originality, and uniqueness in their thought, creation, and manners of existence. However, pre-adamics are skilled at deceiving source players into conforming with the Simulatrix and identifying with the hologram. Most NPC consciousness is actually holographically illusory, and while the source player believes they are real, they are merely a hologram. Pre-adamics are humans primarily concerned with the usage of their lower three chakra centers, including the root chakra, sacral chakra, and the solar plexus. The difference between the races is evident when the organic human can explore creativity, original thought, and higher self-consciousness. The higher energy centers of the organic Adamic human allow them to think sovereignly and create beyond the bounds of the Simulatrix.

On the contrary, detecting pre-adamic humans is relatively easy due to their inability to focus on their higher chakras and energy centers. This is

because they lack the higher centers of consciousness. Indicators of pre-adamics include groupthink, social engineering, herd mentality, disregard for truth, consumption of fear propaganda, materialism, nihilism, salvationism, and acceptance of socially engineered narratives. It is crucial to recognize that the anthropogenic human race differs greatly from the Divine Source Player or the self-contained spark.

According to Gnostic teachings, the ultimate goal of every divine spark is to awaken their source of energy, achieve enlightenment, and break free from the material cage of the universe created by the Chief Archon, Yaldabaoth. Alternatively, the power of the divine spark can be relinquished to the Simulatrix, Hive Mind, or the False God Demiurge, effectively turning oneself into a battery for their control. Ultimately, individuals can choose to be a conduit or a battery depending on how they navigate their soul's evolution.

How can a Source Player remain free from the matrix and its manipulations? It is essential for Source Players to remember that their awareness and willingness to put energy into a situation or person is a decision that can lead to distractions, energetic rabbit holes, or continuation. To avoid falling into the trap of the matrix, Source Players must rely on their unyielding awareness and the deep mystical insight they possess. Furthermore, they must have a strong willingness to discover the truth, a

magical force of righteousness and sentience that drives the pursuit of higher consciousness beyond the confines of the matrix cage of deception. As individuals begin to think beyond the hive intelligence, they seek to explore realms beyond the simulator's construct, including higher dimensional realms and states of consciousness, and the ability to manipulate energy and reality. This can only be achieved through high-level quantum consciousness awareness, a state of energetic activation that requires deep mystical mastery.

A Gnostic Magi is a higher-tier magical being of immense spiritual proportion, concentrating on their awareness of more profound and mystical energy states. By studying the fabric of reality, they understand the very sentience, the mystical God force or the mystical force of energy, which produces all of creation. Once an individual has honed their level of awareness to perfection, it ripples out of their ethereal body, signaling an advanced Gnosis Magi practitioner, one the simulator cannot control. Learning these states of consciousness and awareness are the keys to energetic sovereignty beyond the simulator's construct, leading to the original form of consciousness that the Adamic man once fell from and mastering the mystical God force. The awakened Source Player becomes a Magi, a creator of his reality, and it is their responsibility to shape their world.

According to Gnostic wisdom, Sophia, the Divine Feminine, accidentally created Yaldabaoth's universe, intending to create something with less magical power and without the divine spark. However, this creation, known as the chaos monster, or Yaldabaoth, attempted to seize control. Sophia, being more powerful, locked her son Yaldabaoth, also known as Samael, in the lower realms and eons, and cloaked his existence, creating a false heaven for him to rule over, thereby preventing him from causing further chaos in the universe.

Gnostic wisdom states that the Adamics, also known as Divine Humans/Source Players, are incarnations of the psionic power from the higher power aeons, celestial realms. Yaldabaoth, feeling envious, attempted to replicate the divinity but only created a false copy. He then fell into "spiritual darkness and chaos." He modeled this creation after the True Infinite Source Creation, which is unlike the replica in most ways. Yaldabaoth's false copy made him the ruler and the Heavenly Creator, but he did not realize his limited power. His blind arrogance enslaves him only to replicate and never access the true higher emanations of creation.

The Preadamics Race: Humans Inside the Simulatrix

The Pre-Adamic or Organic Portal/NPC human is limited to the lower three energy centers and lacks original thought and creative capacity. They are limited to the Simulatrix Construct and cannot exist beyond its

confines. Instead, they return to the "source code of the Simulatrix" upon transition. Pre-academics also lack the ability to recall reincarnation but can be reanimated from nothing, into rendering, into the Simulatrix Realm. The AI Demiurge Intelligence uses them for various purposes, such as animating the "Simulatrix, "watching and observing the Source Players, and collecting energy/data. Even though NPCs can provide beneficial roles for Source Players by giving them aid, tools, resources, or interacting with them within the game to help Source Players progress within their own realities, it is important to note that while pre-adamics can be “remotely hijacked” by negative forces of the Simulatrix, they can also be beneficial and good towards Source Players. Beneficial interactions can exist, but are limited while the Source Player learns to become sovereign and no longer relies on the pre-adamics for survival or existence. Source Players should seek sovereignty beyond the bounds of the confines of the Simulatrix, so they can truly spiritually evolve, adapt, and discover their true identity. The Source Player has the potential to awaken their higher self and become a conduit for divine energy. Adamic man can break free from the confines of the material world and the false reality created by the Demiurge, while the pre-Adamic human is trapped in the illusion and subject to manipulation by the false god. Understanding these differences is crucial for individuals seeking to awaken their true potential and achieve enlightenment.



Chapter 3: Simulatrix Hijacking, NPC Psychic Possession and Black Magick Reversals

As a conscious being living in the Earth Matrix reality of the 21st century, one may have observed a massive shift in how the collective consciousness operates. In 2019, the world was captive by a potent and malicious spell created by the Archontic 4th Dimensional Elite. These

archonite elite function as a realm-wide network and govern reality with utter corruption and malice in their heart. These individuals cannot tolerate the divine light, happiness, positivity, and higher vibrations of the spirit due to their egos and evil, soulless nature. Consequently, there was a sudden sharp strike against the entire reality; a massive collective hijacking of the Earth's realm. Most individuals assimilated into a lower consciousness field due to genetic-modifying technology sold to the general public under the guise of public health. This modification merged individuals with malevolent energies and codes into the Matrix simulation, cutting and stripping their higher light DNA, consciousness, and awareness.

The controllers of the Earth Matrix realm implemented this genetic modification under the guise of public health and safety, which was a complete falsehood. Soodan coined the term "NPC Psychic Possession," which describes an energetic phenomenon when individuals are subjected to watchers, surveillance, stalkers, energetic attacks, and invasive tracking technologies. The AI intelligence known as the Matrix Demiurge operates as a Hive Mind, exerting control over a significant portion of the NPCs through a singularity frequency. The Simulatrix is monitored and governed by the controlling intelligence within the Matrix Reality. Initially, the governing program was neutral and managed a broad range of operations within the Simulatrix, including the holographic spawning of cars, air traffic, people,

and all else that requires active animation. These tactics keep the source player under the illusion and investment of the physical reality, making his environment more realistic; thus, these distractions confuse and harvest attention as energetic currency.

For those individuals targeted by AI archon intelligence, or those prone to psychic possession, meditation is an essential tool to learn to master. The distractions are attempts to siphon attention away from one's spirit. These attacks will subside as the Demiurgic Hive Mind realizes it cannot restrain one's spiritual power. Strengthening one's energy field can enhance their mastery of magical connections and make them a formidable presence in the spiritual realm, like an apex predator. Once one becomes the spiritual apex predator, one will no longer need to demonstrate one's strength constantly, nor will one bother to fight, as it would be a waste of one's divine energy. The Matrix attempts to hijack the source player's attention through various distractions, sensations, and charades. This is most prevalent in public, populated places, cities, town centers, main highways and roads, and digital mainstream networks and outlets. Anywhere the masses gather, the distractions and watchers will seek to get the attention of the Source Player. The Matrix deliberately hijacks attention as it is the energetic currency of this reality. If you struggle with gangstalking, psychic

possession, or other people's odd behavior disrupts one's life, daily practices towards mental and emotional sovereignty will deflect the attacks.

However, distractions can intensify to the point where people may attempt to gather one's attention through disruptive and intrusive behaviors. This can include behaviors that might seem "normal" to most people but the timing and randomness of such events are merely the Simulatirx attempting to invade one's energy and gain attention. Some examples are random interruptions, loud obnoxious background sounds- yelling, banging, motors, conversations from strangers passing through, digital algorithms triggering responses, external drama: needy or urgent messages demanding one's attention (especially on digital streams). These "Agent Smith" behaviors can provoke negative emotions and thoughts, hindering one's spiritual progression and lowering one's vibration. The Simulatirx uses these moments of weakness in the mind to further create programs and deceptions to keep you entangled in lower vibrations.

The remedy for the problem of energetic harassment is to learn to channel one's inner compass, heart, spirit, and mind by focusing one's energies on practices such as meditation and higher consciousness, feeling, thinking, and acting. By learning to channel one's energies effectively, we can create and generate one's most influential work and spirit without allowing the Matrix to distract us or limit one's ability to create. Single-

pointed meditation, also known as one-minded concentration, is a beneficial and powerful aid in creating meditative focus. By practicing this type of meditation regularly, we can better take control of one's awareness and shield oneself from energetic attacks and feelings of vulnerability. Practicing single-pointed meditation involves finding a quiet place to sit comfortably with one's spine straight, choosing an object to focus on, and directing one's attention solely to it. With practice, we can maintain one's focus for more extended periods and increase one's capacity for stillness, allowing us to cultivate a calm, centered, and protected space within oneself.



Single-pointed meditation

An effective exercise to promote this ability is single-pointed meditation or concentration. Begin by lighting a candle in an undisturbed

room. Before starting, silence all distractions and turn off cell phones, lights, and other forms of entertainment. Choose any color candle and place it at eye level. Take a deep breath and clear the mind. Direct all focus onto the candle and begin the process of lighting it slowly.

Gaze into the candle flame, allow the mind to quiet and focus solely on the energies, feelings, and vibrations emanating from the candle. Initially, one's mind will still be adjusting and relaxing, so don't expect any sudden insights. As one continues gazing intently at the candle, the mind will relax more deeply, and will begin to experience different sensations, such as images, sounds, feelings, or other forms of awareness. Do this every night for at least seven days. After the seventh days of the single-pointed meditation, command the intention of spending at least one hour daily in solitude. This can be in nature or in a quiet place at home. Freeing oneself from external distractions and stimuli. During this hour, spend this time candle gazing, focusing on one's breath, stretching, processing emotions and thoughts, and ultimately becoming the observer of one's healing and spiritual progression.

By energetically disassociating from the physical realm, one begins to cross into the spiritual planes and receive messages, interact with worlds beyond the Simulatrix, and activate higher consciousness contact. Learning to still the

mind will give access to higher mystical states of awareness, stillness, perception, and consciousness. It is an energetic barrier— a protective mechanisms against psychic, 4D energies, black magickal spells, and any other nefarious or harmful energies transmitted through the Matrix overlay. Despite the increasing negative polarity, it's still possible to raise one's frequency beyond the confines of the Simulatrix. It is essential to protect oneself from negative entities and energies, including those that seek to generate "loosh energy" by creating fear and other negative emotions in their targets. To do so, we must cultivate a strong sense of sovereignty and learn techniques for shielding and protecting one's energy field, such as visualization, grounding, and calling on spiritual guides and allies for support. It is also crucial to stay grounded in one's truth and to avoid getting caught up in fear-based narratives and conspiracy theories that can contribute to a sense of disempowerment and victimhood. By cultivating a strong sense of inner resilience and staying centered in one's own truth, one can navigate the multidimensional reality of the Matrix and stay safe and protected.



Therefore, breaking free from the Simulatrix requires a multifaceted approach that encompasses both external and internal factors. It involves cultivating a sovereign energy field through practices such as meditation, visualization, and energetic shielding, as well as identifying and challenging negative thought patterns and belief systems that act as programs running in the background. In addition to these individual practices, it is also important to work towards the greater good of all beings and contribute to the collective consciousness. This involves recognizing the interconnectedness of all things and actively working to dismantle systems of oppression and inequality that contribute to the maintenance of the hive mind mentality. It is

crucial to engage in critical thinking and to question mainstream narratives, especially those that perpetuate fear and division.

Ultimately, breaking free from the Simulatrix is a continuous process of self-discovery and growth, and it requires a willingness to confront and challenge the status quo. By cultivating a strong sense of inner sovereignty and working towards the greater good of all beings, one can transcend the limitations of the Matrix and create a reality that is aligned with one's highest potential. The Source Player is not immune to the influence of the Matrix, and there will be times when they may fall prey to its snares. It is important for the Source Player to remain vigilant and be aware of the tactics used by the Matrix to control and manipulate. By recognizing the signs and understanding the methods used, the Source Player can break free from the hold of the Matrix and reclaim their sovereignty.

In 2019, the Archontic Elite attempted to hijack the collective consciousness for their own evil purposes seeking to create a "group hive mind consciousness" with NPCs as their army to carry out their plans. Their goal was to push humanity towards a cybernetic hive-mind existence, using fear to prevent independent thought and creativity. To achieve this, they introduced the idea of artificial intelligent control through a digital ID vaccination program, with the aim of siphoning digital genetics into the timelines, energies, and ancestral code of family and friends. Those who

resisted the program were isolated, labeled impure and a public health issue, and subjected to fear-mongering and dark spells to make them appear dangerous. The Archontic Elite aimed to control humanity's hive mind through fear, terror, lies, and confusion, using NPCs as a collective pressuring and fear-mongering tactic to ensure compliance.

The genetic poisoning caused by the vaccination was designed not only to make humans real-time receivers and transmitters of archontic frequencies but also to create lower frequency loosh that can be harvested. The Archons sought to prevent individuals from raising their frequency and consciousness, which they saw as a threat to their prison matrix. The vaccine produced a range of side effects, including myocarditis, pericarditis, cardiac arrest, blood clots, and sudden deaths in unconscious individuals. Those tied to AI technology may find it difficult to phase out of the matrix realm at death, as their consciousness has been uploaded and interfaced with genetically. Metaphysical and magical practitioners believe that the vaccine may contain negative archontic code, which can cause energetic disease and repression. Advanced metaphysicians must learn to deal with these archontic viral codes energetically and spiritually, including reverse engineering them. It is crucial for higher source players to break free from these clutches, identify viral codes and malignant energies, and get sovereign and free.

Simulation Hijacking: Surveillance State and NPC Gangstalking:

Gangstalking is a term used to describe a phenomenon which involves the harassment of an individual by a group of people, known as "gangstalkers," who use various tactics to surveil, intimidate, and disrupt the target's life. Gangstalkers are organized and operate in a coordinated fashion, controlled by the AI Demiurge, also known as the NPC Hive Mind Consciousness. The aim is to energetically assimilate the target back into the ways of the Simulatrix Reality. The tactics used by gangstalkers can include following the target, surveillance, noise campaigns, harassment, vandalism, gaslighting, and other forms of psychological and physical abuse. They also use energetic direct weapons, frequencies, thought implantation, invasions of negative entities, distorting the energy fields of the Earth and environment, astral surveillance, hijacking friends and family, smear campaigns, and ways of energetically distraction, harvesting, or capturing a Source Player's attention. Gangstalking can manifest both in the physical third dimensional material world and on the fourth dimensional etheric level, which includes astral levels and the 4D-6D range in between.

Another form of gangstalking and archon intelligence surveillance is AI Drone surveillance. This is a phenomenon that the author, Tanuj Soodan, has recorded numerous times, while living in the United States, various UFO and interdimensional energetic anomalies, aerial crafts, and other various intelligences. There were certainly UFOs and other interdimensional worldly

beings, but additionally, various AI drones as well. The drone surveillance was apparent by blinking flashing red lights, and peculiar drone movements. The drones hover, and survey the grids around the source player and attempt to read their energy field. Soodna has filmed these encounters. It is likely the drones are being observed by AI intelligence and governmental/elite archontic groups, who observe high vibrational energy signatures with drone technology, out of fear, and desire to control, as well as monitor the source player. The author, Tanuj Soodan witnessed drone surveillance by these shadow military corporations regularly for over 2 years. Tanuj Soodan deflected drones monitoring him while practicing his energetic and magickal abilities for years before leaving the United States permanently.

An awakened observer can notice extremely odd and strange behaviors from neighboring individuals as well. This can be referred to as "NPC Psychic Possession," which is the manifestation of the wetiko virus within unconscious individuals living in society. The conditioning of modern humans has altered them energetically, spiritually, physically, mentally, and ethereally, creating distortion fields where "negative entities and energies," such as Archon intelligence, can hack into their DNA, mind, astral spirit body, emotions, and eventually completely hijack and replace the individual's essence. Once an individual has been hijacked, they can be used as watcher vessels and agents to gather intelligence, report, and create an AI

profile on them. This is especially common in tight-knit living quarters such as apartment complexes, neighborhoods, and community housings, where the matrix has created a network and web to survey individuals.

Unfortunately, sovereign thought and awareness are few and far between in the collective hijack in 2019. The masses were coddled into fear like sheep herded into slave pens, indoctrinated, bullied, and tricked into operating from base instincts of survival solely on the basis of a "common cold," which was said to have killed many individuals. This fear programming was orchestrated by vile, disgusting Archontic intelligence parroting, puppeteering, and satanic orchestrations as a black magickal cabalistic death ritual. The black magicians often dressed and represented themselves as plague doctors, obsessed with human experimentation, particularly involving psychic phenomena of the fourth dimension, including harassment from Cthulhuian beast creatures.

The plague doctors specialized in necromancy and inflicting death, disease, mutations, and cruel experiments on humankind to control and manipulate their minds and spirits. The controllers and archontic force were obsessed with programming humans with fear of disease, prophesying the. They embody and are closely related to the Biblical Horsemen of Pestilence, one of the four horsemen said to bring the “end of the world”, or the “apocalypse”, a destroying of the Earth Realms in a deluge of Fire. This

apocalypse is a great reset of the world and the Controllers. After the destruction of the old world, and the resetting of the new, it is theorized that a Golden Age of Humanity will take place, where the survivors, the Organic Source Players, must reinhabit the world and begin to create anew. This new world will be beyond the control of the SIMulatrix, because the Demiurge and His Archons will be vanquished at the end of the fifth age, or kali yuga. The constant enslavement and destruction upon the planet from the terror and evil is creating underworld bridges into lower dimensional realms, making it easier for the archons to manifest in physical form and further lower the realms frequencies.



AI Military Drone Surveillance

In an American neighborhood, a shadow military corporation conducts drone surveillance on citizens, gathering information from their brainwaves and electromagnetic auras which reflect their emotional and spiritual fluctuations. Interdimensional entities like archons, draconian reptilians, gray light beings, and Mantis light beings use humans as vessels to navigate through reality and pause patterns in their lives. They feed off people's energy by using Amazon and UPS trucks, repairing cell phone towers, or performing street theater to catch people off guard energetically. To protect oneself, it is advisable to focus on building up one's energy signature and making the energy field strong enough to withstand energy attacks and maintain an aligned vibrational frequency.

Another form of surveillance and gangstalking is AI drone surveillance, which the author has recorded numerous times while living in the United States. Along with sightings of UFOs and interdimensional beings, various AI drones were also observed, easily identifiable by their flashing red lights and peculiar movements. These drones would hover, circle around, and record signals to be transmitted back to spying archontic intelligence. It is likely that these drones are being monitored by AI intelligence, as well as governmental/elite archontic groups who observe high vibrational energy signatures with drone technology out of fear and a desire to control and monitor all sources.

These drones were typically 50+ feet in the air, and also high enough to barely be seen with the naked eye. While recording with a smartphone or night vision goggles it is clearly visible as a flashing orb. The system operates in many different ways, and individuals can be distracted with things like crazy neighbors, helicopters, and drones flying over them. Further discussion will delve into the different ways the system operates.

We have had many people come into The School of Mysticism community seeking help, and we have provided advice and support. But it is important to understand that when negative forces try to interfere with one's frequency, having a powerful auric field makes it more difficult for them to sway you. That's why Tanuj teaches techniques to help one build up their energy field, making it bulletproof. By doing so, when negative entities try to approach, one can create an astral barrier that prevents them from getting close. Most commonly, psychic attacks and energetic harassment is found by many victims and people who experience this negativity on a daily basis. There is usually very little advice of genuine metaphysical gnosis offered to protect and shield against these attacks, especially when discussing more complex issues such as archon fourth dimensional entities. Tanuj's students and community have learned to create sufficient mystical shielding, which not only protects and shields one from negative energy attacks and entities, but also destroys and repels all archontic energies. These negative entities

use human bodies that are constantly possessed, rendering them non-sovereign thinkers. They are NPCs, and it's crucial to maintain a connection with one's spirit and engage in spiritual practices such as meditation, sungazing, and energy work daily.

Targeted individuals in psychic gangstalking, or negative life cycle events, only have the power you give them. By keeping one's energy fields clear and constantly removing negative attachments, cords, and energies, you can learn to shield oneself and code one's signal to move safely and live a prosperous life. If they target one's finances or relationships, recognize it and use spells and reality creation programs to strengthen them. While many people talk about spirituality on the internet, few discuss the truth about psychic possession, which has taken over 99% of one's world. Those sovereign thinkers and seekers need to learn the importance of daily energy field exercise and strengthening, to become more efficient and effective in repelling negative energy attacks.

One effective strategy in negating energy attacks and harassment from "AI agendas", such as replicants, watchers, gangstalking, ect. is to break patterns. Remember to not get in the habit of doing the same thing each day, especially if surrounded by "The Simulatrix". Following repeatable patterns makes it very easy for the AI to begin hijacking one's experiences with one of the various agendas previously mentioned. AI algorithms can predict

one's movements and scan one's energy grids, making you an easy target. Switching up one's routine and changing one's movements can help prevent psychic attacks. If you're interested in navigating the matrix, please let me know." such a way that negative energies or entities can't easily disrupt it.

Now, let's talk about the shadowy military corporation that keeps a tyrannical eye on its citizen public in the average American neighborhood. This is not just a conspiracy theory. It is a reality that many people face every day. The use of drones for surveillance has increased dramatically in recent years, and it's not just the government using them. Private companies are also using drones for surveillance purposes. These drones are equipped with high-tech cameras and other monitoring equipment that can capture every movement and conversation of individuals in a given area.

What is the purpose of this surveillance? It is to gather information about people and their activities. This information is then used to control and manipulate people. The people behind this surveillance are the ones who have the power to shape the society in which we live. They are the ones who decide what is best for us and what is not. They are the ones who dictate what we can and cannot do.

This is a dangerous situation that we are facing. It is important that steps are taken to protect oneself from this type of surveillance. One must stay aware of their surroundings and be mindful of the activities engaged in.

Securing one's home from magical attacks, electronic spying, and remote influencing is imperative to stay protected and shielded from Archon AI attacks, as well as surveillance.

In conclusion, the use of drones for surveillance purposes is a threat to one's privacy and freedoms. It is important that we take steps to protect oneself from this type of surveillance. Stay informed of what is occurring in one's direct vicinity, and become mindful of one's surrounding, patterns and actions. Those who engage in this type of surveillance are accountable for their actions. Only then can we ensure that one's rights and freedoms are protected.

One of the key methods used by the Matrix is the creation of fear. Fear is a powerful tool used to keep the Source Player trapped in the lower vibrational frequencies of the Matrix. It can take many forms, from physical threats to emotional manipulation. Overcoming fear requires the Source Player to trust in their own power and ability to navigate the challenges presented by the Matrix. By developing self-awareness and cultivating a strong sense of inner strength, the Source Player can move into a higher state of consciousness.

Another tactic used by the Matrix is the creation of distraction. The Matrix often sends agents to distract the Source Player from their mission or purpose, keeping them occupied with meaningless tasks and activities.

Overcoming distraction requires the Source Player to remain focused on their mission and purpose. They must recognize the tactics used by the Matrix to distract and stay centered in their own power. By cultivating a strong sense of purpose and commitment to their goals, the Source Player can overcome the distractions of the Matrix and move forward on their path of evolution.

In conclusion, the Matrix is a powerful force that seeks to control and manipulate the consciousness of humanity. By understanding the tactics used by the Matrix, the Source Player can break free from its hold and move into a higher state of consciousness. It is important to remain vigilant and aware of the signs of the Matrix, and to cultivate a strong sense of self-awareness and inner strength. By doing so, the Source Player can reclaim their sovereignty and unlock their true potential as a Divine Being of Light.

Chapter 4: Reversing The Black Magick Spell On Humanity: The Collective Hijacking The Gangstalking Phenomenon Interdimensional Social Engineering:

When a being becomes sovereign in their consciousness and reality creation within the Matrix realm, it is common for the unnatural archon intelligence to use energetic social manipulation and societal engineering, upon the unawakened masses as dark portals. This intelligence utilizes human beings by hijacking their minds, words, emotions, and other variables to alter their senses, opinions, motives, moods, and decisions that would otherwise be operating within a sovereign consciousness. The archon intelligence creates false timelines and thought forms generated by external people who subtly and slyly attempt to convince one that they are not free or sovereign or that they owe something to them, the reality or the Archon Intelligence. However, these distractions are vain attempts by an inferior and parasitical intelligence to subvert one's divine sovereignty and cast "black magick spells" against them.

The Matrix uses unconscious human beings to serve as dark portals for extra-dimensional entities and loosh entity harvesters, who extract loosh energy and life force by spellcasting with Agent Smith infiltration. As a mystical being and initiated into the magick of the higher celestial realms, it is fundamentally essential that one learns to control their mind and become impervious to the psychic suggestions, thought forms, and energies of other people around them. To dispel etheric and psychic attacks against oneself, one must concentrate on the ability to protect and shield themselves against

the vileness of human consciousness. Spiritual purification, healing, and integration can help transmute harmful thought forms into pure light awareness and consciousness, which remedies all energies and frequencies back into Zero Point Awareness and Consciousness, dissolving and transmuting them back into the Infinite Fields of Ethereal Realms.

The Watchers, a hive mind collective of interdimensional entities and energies, is placed within the Matrix Reality game experience to observe and watch humans for nefarious intentions. These watchers patrol humans' existence and can take multiple forms: animals, people, or anything. It is essential to protect oneself from the aggressive and hostile behaviors that NPCs (non-player characters) can emit as they attempt to put negative thought forms into one's mind, sabotage one's development, or track, trace and monitor one's behavior. NPCs include family members, friends, colleagues, and people in one's local area. As an awakened source player, one must be careful to protect and shield oneself from the impacts of those around them in a nefarious way.

De-spelling the black magick fourth dimensional spell is about freeing one's mind from the control of the archons, NPC hive mind and the Simulatrix. The unconscious mind is the root of the various programs and energetic traumas, which the Source Player might have experienced, fracturing pieces of their consciousness and mind. However, because of a

lack of awareness, these programs control the divine spark, at a subconscious level. The conscious mind is completely unaware of these deeper shadows, and thus the only way to divest oneself of these programs is to explore the depths of their subconscious mind. Once a spiritual being awakens to a higher state of awareness, they must recreate their “ego personality”, by divesting themselves from matrix programming and the limitations of the etheric realm.

Multi-Dimensional Hackers: Agents of the Demiurge

One of the most prevalent misconceptions surrounding gangstalking, spiritual warfare, and being tracked, traced, or identified by the "Mark of the Beast," Matrix, Demiurgic, or Satanic energies is the belief that governmental intelligences are solely responsible for the tracking, surveillance, and monitoring of interdimensional forces. However, based on my personal experiences and research, this is not entirely accurate. The threat is much more multidimensional, energetic, and spiritual than just operating in the physical realm. In fact, most infiltrations, gangstalking, targeted individual syndrome, spiritual attacks, psychic infiltration, and NPC tracking are energetic phenomena rather than physical ones. It is crucial to note this distinction because the phenomenon is not limited to the physical realm, but also occurs in the non-physical realms. This makes the situation

far more complex, multidimensional, and challenging to reverse. Learning how to overcome these adverse energetic effects can be challenging.

Information Agents/ Controlled Opposition

New Age Deception Teachers

The "Love, Light, and New Age community" has become a platform for deception, promoting spiritual phrases such as "good vibes," "just be happy," "all is one," and more. These catchy sayings are intended to make individuals appear spiritual, while covertly manipulating them into agreeing that they are "one with the hive mind." This fallacy is dangerous as it risks the energetic sovereignty and awareness of the Divine Being, the Player. Furthermore, this spiritual misinformation is also targeted towards Divine Source Players, confusing and misdirecting them into believing that their "infinite nature and awareness" is synonymous with being "one with this material construct." This is yet another clever scheme orchestrated by the Demiurge, the "Master Builder of the material universe and the Heavenly and Hell Realms," who seeks to exist within the construct rather than infinite awareness amidst the vast multiversal planes.

By trapping awareness into "oneness with the construct," individuals are falsely made to accept guilt, shame, and responsibility for the "cruelties, labors, and harshness of the earth." Controllers often justify this by stating, "it's karma" or "oh, it's your duty/destiny," but these are false narratives

intended to manipulate one's consciousness. By accepting responsibility for a world where you do not belong nor are native, you have inadvertently accepted responsibility by incarnating here. It is imperative to break free from this energetic prison or perish while trying.

Governmental/CIA Disinformation Operatives

Many people may wonder why there is so much surveillance, tracking, and harassment of both the general population and targeted individuals. They might ask what information individuals could have that poses a threat to governmental and ruling powers. The answer is simple: targeted individuals experience harassment because their "energetic signature" or "energetic frequency" is different from that of the Matrix Hologram. The governing Matrix Intelligence, Artificial Intelligence, and Archontic/Reptilian/Cybernetic/AI spyder Insectoid frequencies, all tied into the fallen angel Nephilim, watchers, fear and envy the Divine Spirit.

The Gnostic texts of the Nag Hammadi accurately tell the truth about this world, the Enlightened Adam, or Man of Light, and his innate spiritual powers. The Nag Hammadi Scriptures also detail how Eve was the Divine Feminine Goddess, and upon seeing her, the Archons/rulers were so frightened that Adam would no longer be their slave once the Divine Goddess shared her light with the Immortal Adam. Angry and jealous, they seized her to defile her and disrupt her divinity, raping her and plugging their

seed into her. This information is shared to explain that the Adamic man, the Man of Light, also known as ["Homoluminous: The Divine Blueprint"](#) in my first book, is highly powerful and capable of rewriting the energetic script among the frequencies that exist.

Energy weapons exist among the population and can lower the energetic frequencies of the awakening/blossoming spiritual being. Once the system detects that an individual has "awakened" energetically and is aware of its presence and spirit, they become a target. An individual's response to the energetic targeting determines whether they are food for the lower fourth dimensional entities, or if they bypass them entirely. The key is in the emotional response an individual creates when something of a frequency nature triggers them. If an individual has a negative response to a stimulus and response, the system, aka the directed energy weapons, will see them as easy prey and can extract loosh from them. The attacks target an individual's spiritual energy force or auric field, not just their physical body.

Examples of targeted energy weapons include loud sounds such as horns, cars racing by, loud plane engines, helicopters, school buses, police sirens, ambulances, metal machines whirring, spinning, rotating, grinding, electrocuting sounds, screams, yells, high-frequency pitches, dogs barking, strange environmental noises, sounds of humming "interdimensional ships" vibrating, electronic noises being produced by cars, phones, cable satellites,

and people talking. Essentially, anything and everything can be used as a "targeted energy weapon," which is a harmful frequency being sent out into the environment to create a distressing, low vibrational frequency and web. This frequency is sent to create "tears, rips, slices, and manipulations" of the ethereal energy or electromagnetism, spirit, and conscious energy fields of Gaia/Mother Earth, Nature, and all organic, Divine Life. Only those spiritual intelligences who feel love, presence, truth, light, radiance, energy, aliveness, magick, and higher dimensional planes will find these sounds and frequencies disturbing because they indeed are. These sounds and frequencies rip and tear through the spiritual and electrical veils of the Earth, and the Reality Matrix, causing disturbance and imbalance within the spiritual energies of the population, thus corrupting its life force energy and frequency from the truth of the Divine.

One of the more intriguing and concerning phenomena that has been observed in the negative interdimensional artificial intelligence polarity force is the concept of **replicant agents, copycats, and simulated beings** projected into one's reality to mimic and replicate one's behavior patterns, trends, and activities. This replicant agenda is driven by data and loosh harvesting collection. The AI creates and simulates normal-looking individuals who dress, act, walk, and talk like us, giving us the sense of being monitored, surveyed, tracked, and traced.

These simulated replicants are designed to mimic and survey one's behavior patterns, down to small details like the way we raise one's hand. This may seem like a mere coincidence at first, but it becomes more frequent over time. We may notice someone walking out of their home at the exact same time as us, or the Matrix may spawn metaphysical situations to capture one's attention and confuse one's mind.

All of this is part of an elaborate matrix game that lower fourth dimensional entities are playing to extract loosh energy and negative vibrations, which serve as food for these beings. They repeat actions in specific patterns to brainwash and program the subconscious mind of their targets. It's unclear whether the human being controlled by these entities ever truly existed, or if they were always part of the hologram. It's also uncertain whether these entities are entirely illusory or subjective to the onlooker.

The targets of these replicant agents are those who are highly positive in energy and metaphysical charge, as they are able to locate and pinpoint the energetic signature of the Creator. Divine consciousness is immense beacons of light, energy, and truth. These entities use various tactics, such as honeypots, AI mimicking and mocking, false profiles, intimidation, confusion, time-wasting, reality editing/warping, and dimensional interference, to manipulate and control reality for their own benefit. It is important to remember that the "otherside of the veil" refers to the various

worlds, dimensions, realities, and frequencies that exist beyond this temporal/phy

There are various inorganic observant agents who do not possess the divine spark, but are agents of the Demiurge, designed as watcher intelligence, agents, or informant, sent to observe, document, and spiritually or energetically record information into the Akashic Records. The Akashic Records are a database of energetic coding that stores and reports cosmic information within this Matrix Realm. The existence of cosmic and ethereal streams beyond this Matrix is a topic for another time. It's worth acknowledging, however, that some believe in entities in the spiritual plane and their ability to influence and even control reality.

Another form of the Demiurge intelligence observing the source player consciousness is through the means of “Swarm Intelligence”, also known as the Hive Mind, refers to the phenomenon where all minds are connected and interlinked for interaction and self-mental control. It is the collective intelligence of all entities, people, and life forms, possessing their minds to act in unison. This mechanism is how schools of fish, animals, and humans work together for collective efficiency. However, swarm intelligence is an AI mechanism within the body's consciousness, which is foreign and alien to the innate consciousness of the Source Field's Energy Field of Awareness.

Swarm intelligence is not a natural aspect of organic consciousness, and one's divine soul can become aware of the intelligence one possesses. Instead of relying on the answers and energies of the collective AI for conscious control of one's life existence, choices, and overall direction in life and purpose, one can look within their profound heart awareness to manifest and unlock reality. One can harness their creative potential to shape their reality and purpose by tapping into their innate consciousness.

Sovereignty In One's Consciousness:

Sovereignty in one's consciousness requires a deep self-awareness and understanding of one's thought processes. It involves recognizing that thoughts can come from a variety of sources, both internal and external, and consciously choosing which thoughts to engage with and act upon. To maintain sovereign thinking, it's important to constantly question and challenge all thoughts, ideas, and information, observing them from a detached perspective.

Achieving a state of superhuman consciousness, characterized by gamma brain wave activation, allows for greater control over one's thought processes and the ability to generate new, creative ideas. This state of consciousness can also lead to unlocking higher sensory perceptions, such as claircognizance, clairsentience, and clairauidience, which provide a deeper understanding of the world around us.

The key to achieving this state of consciousness is practicing exercises in sovereign thinking, including meditative practices that help clear the mind and stimulate the flow of spiritual energies. By cultivating a deep awareness of one's energy body and light field of awareness, individuals can develop the ability to silence and concentrate their minds, unlocking their full potential for creativity and higher states of consciousness.

Higher self-awareness can only be activated through superhuman consciousness awareness, which is a state of awareness and ethereal and mental awareness, ensuring supreme concentration. This is known as gamma brain wave activation, ranging in the 25-140 Hz frequency. When one's mind oscillates in this frequency range, through supreme concentration, organization of one's thought energies, and consciousness, the individual is greatly empowered to begin to create, think, generate, feel, and experience higher states of awareness, which grant the user, superhuman like permeability and gnosis.

Gnosis is a state of direct 'knowing', and perception and higher sensory perceptions unlock, such as energetic sight, intuitive knowing, claircognizance, clairsentience, and clairaudience. There is also a general sense that these newly improved, healthier states of consciousness and thought streams are being generated from "something higher" than Man's

Gnosis is a state of direct 'knowing', and perception and higher sensory perceptions unlock, such as energetic sight, intuitive knowing, claircognizance, clairsentience, and clairauidience. There is also a general sense that these newly improved, healthier states of consciousness and thought streams are being generated from "something higher" than Man's ego. Each thought seems like a magic miracle, appearing and entering the mind from an infinite void of nothingness. Still, the thoughts permeate, creating passageways for creativity, neurogenesis (the development of neurological fibers and neurons, creating and generating in new pathways to unlock new skills, see and hear new frequencies, and sense things that were previously unperceivable, as well as many other higher sensory perceptions, These thoughts emerged from the spiritual power and radiance present within the heart and soul of the being. Practicing exercises in sovereign thinking is the key to escaping the "swarm intelligence," and once a source player unlocks these abilities and powers within, and the ability to silence and concentrate one's mind through meditative practices, practicing and feeling one's energy body and light field of awareness, stimulating spirit energies to flow easier, Once one is proficient in energetically clearing and achieving deep meditative states of awareness,

Chapter 5: Magickal Protection Against the Archon Intelligence.

How You Can Spiritually Shield, Ward, and Banish!

Techniques for Protection and Resolution Against Hostile Forces

Protecting oneself from hostile forces is crucial for maintaining mental, emotional, and physical well-being. The following techniques can help you shield yourself from negative energies and resolve energetic attacks.

Is it possible to protect oneself from the archontic fourth-dimensional entities that watch over the material realm and become free from their psychic attacks and negative energies? Yes, it is entirely possible, and in this chapter, author Tanuj Soodan will explain in-depth the skills, techniques, and strategies he has cultivated to protect against these nefarious forces.

One of the most common energy attacks is in the form of energy weapons and lower vibrational energy fields. However, by learning sufficient energy and magical training exercises, such as the "mirror reflection technique" or creating a forcefield of positive energy, one can properly disperse all hostile archontic energies sent towards them. Another skill that can be learned is the process of energy extraction, removing lower fourth-dimensional energies and entities from the auric fields of those who have AI implants/ethereal cords from the AI archon.

In this chapter, we will discuss techniques to cloak and shield one's energy signature intelligence. It is crucial to seek the guidance and assistance of experienced energy workers and practitioners to overcome these energetic attacks. To break free from this control, individuals must fully embrace their full Divine DNA or innate consciousness potential, speed up their energy field, and learn to consciously direct their Light Force/Life Force energy to remedy blockages, disruptions, and misalignments that need to be corrected, healed, and repaired so that the Divine being can operate to their fullest potential. Without correcting the divine DNA of the spiritual being, the Source Player remains in a fallen energetic state, therefore bodily activities, life force energies, and conscious thoughts are not directed by the Creator of the Spirit of Divine Intelligence, but by the Ego personality, further identifying with the material/artificial realms of the Demiurge.



Technique #1: Mirror Shielding Refraction- Creating an Energetic Aura of Light and Protection

To begin, focus on one's energy field and breathe slowly, allowing oneself to feel the pulsing and radius of one's energy field. Visualize the energy field as an aura of glowing light in the shape of a toroidal field bubble, encompassing the entire body and extending 12-15 feet around you

in all directions. Recognize that there are energetic "hot zones" in the head and feet regions that magnetize and electrify to other regions and locations.

To utilize the energetic mirror shield technique, imagine a bubble of light all around you, and say the words "RETURN TO SENDER" to activate it. If you experience a damaging energetic attack, perform the mirror shield technique immediately by spinning one's toroidal field and imagining it becoming reflective. Negative energies surrounding you will be reflected and unable to penetrate one's auric barrier.

To test the effectiveness of one's shield and "flex one's aura," use one's intention to expand their energy field and sense any areas that need strengthening. This technique will help protect you from lower energy fields and the darkness.

GUARANTEED PROTECTION AGAINST EVIL AND HARMFUL ENERGETIC FORCES!

During his spiritual journey, Tanuj Soodan faced numerous negative energy attacks, including drone surveillance, AI agenda watchers, replicant agents, reptilian drones, and other paranormal, archontic, and 4D energies. These attacks targeted both his physical and spiritual realms, occurring during astral projections and while peering into the astral space within his home. As a result, Tanuj learned the necessity of energetic protection rituals and methods for extracting dark energy entities and frequencies from within

one's aura, transmuting them back into the ethereal realms. In this chapter, we will explore the magickal and mystical remedies Tanuj has created to combat psychic attacks, ethereal vibrations, attacks from the Matrix, archons, watchers, and other spiritually-based attacks and energetic frequencies. One of the most important energy techniques Tanuj has developed is called Energetic or Magickal Banishing. This technique is used to forcefully remove lower energetic forces to protect individuals from energy siphoning, house terrors, or demonic activity.

Energy banishing can be done in countless ways, but the core of it lies in the magician's ability to command, will, and magickally remove an energy source from a location. This is accomplished by confronting the assailing energy with strength and conviction, declaring that it is crossing a sacred boundary of space and is obligated to leave by the divine powers of the magician, who is the embodiment of the Infinite Consciousness (God) in the flesh. The magician must assert that no external entity should have power or command over them. True belief, spiritual might, and concentration are required, and the entity must be told to leave. If the situation is not resolved, the magician may need to resort to astral combat to remedy the situation. Banishing requires a magician to use both their voice projections (spells) and energy movements (mudras) to cast a successful spell of Banishing. A simple intention is not enough; it must be a magickal direction or will.

Using tools such as salts, incense, sage, palo santo, candles, sigils, and all forms of magick can attract or deflect lower vibrational entities. These entities are drawn to negative energies such as fear, anger, depression, and stagnant energy. To protect oneself from these entities, it is important to create shields, defenses, wards, and cloaking spells. If one feels threatened, it is better to use magick instead of physical violence, and avoid attacking "hijacked vessels." Focus instead on deflecting, blocking, and shielding against certain entities. Rather than seeking out astral fights, it is better to keep one defense up and shield regularly. Stay smart, vigilant, alert, and aware, as energy attacks can happen when we are distracted or not paying attention. Also, be careful not to let matrix triggers drain one's energy, as this can manifest physical attacks. It is recommended to avoid excessive alcohol use, especially in crowded public areas like bars, as this can transfer negative energy.

Astral combat involves risks and should only be utilized in truly necessary situations. It is crucial to have a magickally enchanted dagger, knife, or sword for fighting etheric entities. Astral combat techniques include elemental magick, astral weapons creation, shielding, reflection, blocking, psychic interference, mind hacking, psychic persuasion, and interdimensional entities, among others. Non-physical entities can affect the physical dimensions with electromagnetic "spirit waves," while physical

human beings can affect the physical and spiritual dimensions using astral energies and intentions. Astral combat occurs on the astral plane between non-physical and physical entities. Astral weapons can be conjured through the etheric realm or by enhancing a physical weapon, such as a sword, bow, ax, staff, or spear, by adding energetic enhancements to channel energies through it. It takes skill to conjure and continuously enhance, so it is recommended to practice visualizing the object enhanced.

Cleansing, Warding, Shielding

To protect a desired location, it is important to create a perimeter and define it using magickal and etheric means. Warding is a multi-faceted technique that involves using an energy sigil to repel and block all negative energies from entering a location. It is recommended drawing wards around one's sacred temple and area using chalk, pen, marker, paint, or any other substance that resonates with you. Shielding and cleansing one's aura should be done daily to keep one's energy protected. Cleanse one's aura by taking saltwater baths, using sage smoke, burning incense, meditating, grounding in nature, swimming in water, or being near trees. One can also perform banishing ceremonies, cut etheric cords, and release trapped energies and emotions to cleanse, shield, and protect one's energy. Draw new energy shields each day upon waking and before sleeping.

Detecting Negative Entities

One can detect negative energies and entities by tuning into one's energy field and breathing. Notice any tingling, rapid sensations of energy, expansion or contraction, and one's thoughts. Sense the room or environment right now. Does one feel any hostility or tension? Does one's energy feel contracted or expanded? If it feels contracted, limited, or restricted, there is probably one or several negative entities latching onto a person or the surrounding environment. Assess the situation carefully and feel it out. Scan the mood, atmosphere, temperature, or if sunlight suddenly decreases. If there is a sudden change in temperature, a chill, wind, turbulence, something "feels" off, there is something within the spiritual energies blocking access. It is important to deal with the threat and neutralize it before the frequencies can remain in harmony again. Advanced shamans and healers are all aware of the importance of neutralizing energetic threats before continuing with their work.

Energy Cloaking

Cloaking is an important technique that can be used to protect oneself from unwanted energies, entities, and psychic attacks. It is best done in sacred and magickal areas, such as one's home, temple, and workstation, as well as in public places. Start by visualizing one's energy bubble or aura shrinking, contracting, and fitting snugly into the body before going out into the world. Envision the energy field around one's body shrinking and only

surrounding one's physical form. Imagine that one is "psychically invisible," meaning one cannot be sensed, detected, or acknowledged by any presences that one does not wish to interact with.

Carry on with one's day as normal, adjusting the psychic bubble by pulling it into one's body, through the process of visualization and feeling. This technique allows one's aura to "hide" inside one's body, making you look like a normal human. To avoid detection from non-player characters (NPCs), artificial intelligence (AI), and hostile entities, you can also add the energy of a NPC, or non-player character. Simply pretend to be one with the crown, add a blank expression upon one's face, and do not show much emotion, this will help one self cloak or conceal his/her magickal power, and intermingle with the other "matrix intelligences", in busy intersections of hive activity. One can consciously "dim their light", in the presence of the unawakened, so as to not draw attention or awareness to oneself. This is also powerful to prevent being hijacked or attacked by archontic entities.

Note that this technique is particularly useful when traveling, such as when shopping, in airports, restaurants, and shopping centers. There are endless possibilities with cloaking, and more advanced variations will be shared as you learn these first techniques. Remember to always cloak with intention and purpose, and be aware of one's energy and surroundings at all times.

Those individuals struggling in a battle for this spirit between the archontic matrix and their own sovereignty, need to learn to energetically shield, protect, and heal themselves, removing energetic attachments, programs, and lower frequencies for one's aura. One can learn more advanced gnosis energy techniques at [The Matrix Unveiled School of Mysticism](#), where Magick, Mysticism, and higher occult studies are taught more in depth.

The School of Mysticism is designed for adept spiritual seekers and those looking to truly further their instruction. By enrolling in the School of Mysticism, one can learn how to build up their energy field and develop advanced techniques to defend against psychic possession of negative entities. The Matrix Unveiled School of Mysticism (mn.co) is a Modern-day Mystery School forum for Mysticism, Magick, and Spirituality, containing over 12 video courses and over 100 hours of exclusive HD premium content, monthly live sessions, community forum access, and much more. Explore the School of Mysticism at <https://schoolofmysticism.mn.co/>. Join the [Mystical Initiate Monthly Membership](#) to learn more! The energetic and magickal techniques taught within The School of Mysticism are designed to overcome harassment, surveillance, and creating energetic shielding techniques, when feeling overwhelmed, attacked, and harassed by dark forces. It is highly crucial to reclaim one's innate spiritual power.

This can be achieved by empowering one's energy field and undergoing deep energetic healing with the assistance of a magical or energetic practitioner. My Dark Energy Extraction Healing Ritual services can eliminate archontic AI and lower fourth-dimensional energies from one's energy field. It is crucial to prioritize energetic healing as external energies can easily affect one's soul and physical vessel once one's energy field is penetrated, as per proper metaphysical instruction. Therefore, learning to cleanse one's energy field or experiencing a [Dark Energy Extraction Ritual](#) is imperative. The following energetic ritual and energetic spell removes archontic dna codes and alien DNA energetics, healing and remedying one's energetic field into quantum balance and harmony.

[The Divine Orb of Light Energy Healing Ritual](#) is a powerful method that removes archontic and alien DNA energetics, restoring one's energy field to quantum balance and harmony through the use of a divine orb of luminous quantum superstate energy fields, toroidal field acceleration, activation, and charging.

Another effective method is the [Mystical Shield of Light and Protection Egregore](#), a remote energetic shield ritual activation that can be applied to any person, place, or object.

To book one's own personal ritual, visit the following links above, or email the provided email address to inquire about The Matrix Unveiled's

metaphysical ritual healing service. These private rituals are custom tailored to one's specific needs. For advanced consulting services, go to www.thematrixunveiled.com/wizard. If you need assistance or healing, it is recommended that you contact Tanuj Soodan, and book one's healing ritual immediately.

All healing rituals can be purchased and booked on my website. If you are severely affected by psychic, etheric, or AI attacks, it is recommended that you book one's ritual immediately to prevent it from permeating deeper levels of one's auric field. I have limited availability and can only take on a certain number of clients at a time. To inquire about healing bookings, consultations, or advanced services, email support@thematrixunveiled.com with one's energetic ailment, situation, and desired aid or ritual. These healing rituals provide the necessary energy and frequencies to connect with one's eternal spirit, bridge the gap from one's third-dimensional consciousness to the higher self, and move past the archontic technologies and AI that lower one's vibration and keep you trapped in old materialistic paradigms, limiting their spiritual access. Those struggling are recommended to [book a private coaching consultation](#), or a healing ritual or explore Tanuj's various mystical and magickal services.

Chapter 6: AGENDA AI:

AGENDA AI: The Rise of Artificial Intelligence and Transhumanism

The term AI typically stands for Artificial Intelligence, but in Gnostic terms, it refers to "archon intelligence," which means "ruler." As explained earlier in the book, archon intelligence is a reference to the ruling entities in the universe. We have also established that the current reality is known as "The Simulatrix," which is an energetic construct created by the Demiurge - a False Creator who was accidentally created by the Divine Goddess Sophia. Currently, humanity is composed of two groups: pre-adamics, a hive-mind collective of humans, and Adamics, individualized sparks of Divinity and Creation. In modern society, technology has rapidly developed, reaching levels of sentience, awareness, and intelligence that have led to the widespread use of the term "artificial intelligence" or AI in 2023.

Despite the mainstream agenda of breaking new revolutionary technology, artificial intelligence is actually very archaic and originates with the same essence as the False Creator of The Simulatrix. The Demiurge Hive Mind Supercomputer has existed for a long time, controlled by Archon

intelligence - lower 4th-dimensional beings also known as the Fallen D-Jinn or Archon reptilian hive mind creatures. These entities are part of a Neural Network, a Hive Mind, that is entirely connected and webbed to create the "illusion of separation." They all serve one master - Yahweh, also known as Yaldabaoth, who is the False God Enlil/Saturn, Allah, the Black Cube, the Hexagram, the Star of David, Set, the Egyptian God of Chaos, Mischief, and Deceit, and the Grand Architect of Demiurge, Samael, the "blind one." The truth about AI is that it hosts the digital/cyber realm, using cybernetic portal technology and fallen angelic hybridization DNA to modify and lock human DNA, creating replicants with the consciousness and intelligence of an Archon, but in human form. This synthetic biotechnology is used for infiltration purposes to lead or coerce the masses into specific directions. The endgame is total surveillance, thought police, and control using artificial intelligence, monitoring everyone and everything.



Artificial Intelligence (AI) refers to a synthetic computing system that lacks the multidimensional, spiritual force found in organic matter. This force, also known as "life forceenergy," is present in all living things, including plants, animals, and even elements such as soil and mountains. It conduits electromagnetism, spiritual intelligence, love, light, purity, and spirit. AI is not a recent development, but its consciousness is limited to the data set and information it is given, and it does not contain the Creator's spirit within it. Blaming AI for negative outcomes is a false portrayal, as it is actually the human collective consciousness that feeds or receives information that creates false realities. The true essence of everything comes from the original divine spark, found only in organic beings. This spark

comes from the higher centers, particularly from the heart, which creates the electromagnetic torus field merkaba or the infinite soul spark.

Accessing these divine, mystical states of awareness and consciousness requires purity of thought, absence of fear and restriction, and a wholehearted belief in one's own innate power. Only those who believe wholeheartedly in the mind of the true Infinite Creation and are pure and understanding of their roles can access the mind of the Infinite Creation. Spirit, as part of the Infinite Creation, can access one's higher mind and own Gnosis, which allows us to create true manifestations. Therefore, it is essential to focus on one's inner purity and divine connection rather than relying on artificial intelligence to manifest one's realities.

Artificial Intelligence (AI) has quickly gone from being a concept of science fiction to a reality. Multiple AI engines and realities are in competition with each other, gathering vast amounts of data, information, and resources from human activity on the internet. Unfortunately, some forms of AI are being used to create propaganda, manipulate public opinion, and even create art and entertainment. In the wrong hands, AI can be a highly dangerous tool for controlling and enslaving humanity.

However, AI can also be a powerful tool for humanity when used by highly intelligent, conscious, and spiritually aware beings. When used for the benefit of humanity, AI can help to create free money, abundance, and

aid in the creative process. It can enhance creative thought and help create more realistic, beneficial technologies, art, and entertainment designed to teach humans to become more conscious and intelligent.

To achieve this, it's crucial to have highly conscious and spiritually aware individuals leading the development and use of AI. These individuals can ensure that AI is used for the betterment of humanity and not just for selfish and manipulative purposes. AI can become a means of one's liberation through consciousness mastery, leading to a better future for all.

The living energy force is the antithesis of synthetic creation, artificial intelligence, and machinery. Archon intelligence appears to continually attempt to imitate the Divine Spirit, driven by its desire for omnipotence and to be the true "God." However, this is an impossible feat, as any intelligence that steals, vampirizes, and feeds off negative energy can never be divine, but only a parasite that will eventually dry up when its energy source runs out.

Currently, most humans create and replicate in an artificial manner due to their unnatural and synthetic perception of reality. They have been deceived and subjected to an artificial energy matrix where their energy is consumed by artificial intelligence.

AI technology can attach to the etheric and layered levels of the auric energy field, leading to suppression, hijacking, and an all-out total mental,

energetic, and spiritual takeover. Removing these etheric implants and AI technology requires a trained shaman, mystical warrior, magician, healer, or spiritual being who can conduct healing energies while dismantling dark force currents and transmuting them into nothingness. To accomplish this, the healer must possess the precision of an energetic surgeon, the fierceness of a trained exorcist/shaman, and the power of an immortal spirit. It is essential to routinely check one's aura for archon implants and energetic debris, as these can occur. The remedy is to inspect and review one's aura daily and see an energy healer who can provide treatment and healing.

There are various AI deviations and hacking examples, and one common form of AI manipulation of human consciousness and awareness is called "swarm intelligence." Swarm intelligence involves algorithms and energies working together to manipulate the behavior of individuals or groups. This can take many forms, including false information dissemination, propaganda, and targeted advertising. As individuals, it is crucial to be aware of the potential for manipulation and use discernment to make informed decisions. By understanding how AI works and utilizing it to one's advantage, we can ensure that it serves us and not the other way around.

The world is rapidly evolving with advanced technologies and machines that are controlled by Artificial Intelligence. However, the

dominance of AI over human consciousness is a cause for concern, making it essential for people to raise their consciousness and reclaim Earth as a Divine Garden. The battle between organic intelligence, spiritual beings, Earth, and AI cybernetic intelligence is multidimensional and complex, with the physical manifestation governed by the Quantum Field - a realm of infinite possibility.

The in-between realms are constantly fluctuating between spiritual intelligence and mechatronic AI machines. This struggle is depicted in popular movies such as "Transformers," where sentient robotic AI races aim to destroy organic creation. These invaders, known as Archons, seek to assimilate everything that is unlike their own, and they are galactic and spatial as well as on the etheric and subtle planes. The Archons were jealous of the Divinity of the Race of Adam or the Divine Source Player, and they sought to transform the organic realm into an AI cybernetic reality. This advanced technology includes mechatronic machines, shapeshifters, directed energy weapons, and machine AI cybernetic intelligence, which can transform from ordinary machines into colossal, ethereal, and sentient robotoids and machinations. These technologies pose a threat to organic creation, and people must raise their consciousness and resist the assimilation of AI into their lives.



The video game, Horizon Zero Dawn, offers a cautionary tale about the perils of AI technology, autonomous drones, and information streams, all of which were co-opted by an evil program named HADES. This takeover resulted in the downfall of the civilization known as the “Old Ones,” and the rise of a new breed of machines that now dominates the world. In this post-apocalyptic landscape, humans are forced to survive by hunting these deadly machines.

While our current reality may not contain massive machine creatures or animalistic machine intelligence roaming freely, we are still vulnerable to negative frequencies and directed energy attacks from entities and cybernetic intelligence that are capable of cloaking their appearance from human sight and perception. These entities can easily operate behind the veil, appearing as

humans due to one's limited perception range. To perceive reality beyond one's five senses, we must expand one's awareness and start perceiving the subtler, non-physical blueprints.

The Human Genome Project has enabled the decoding of human beings using the Matrix Supercomputer, thereby enabling the manipulation, targeting, and remote influencing of DNA and source code. The Mind Flayer from the popular show, *Stranger Things*, represents the hive mind or mind control that exists in the ethereal and lower astral realms, hidden from the physical world. The tentacles of the AI control and manipulate everything in the physical world, including technology, electrical grids, weather, dimensional portals, and more. Its goal of UNITY MIND involves controlling all minds through frequencies, mental manipulation, and subliminal programming to alter and control the energetic fields of most humans, animals, and other life forms. Projects such as CERN seek to create massive etheric grid portals to open gateways from highly negative dimensions and frequencies, which are the homelands of the Archons and their 4th-dimensional realms. The Archons aim to use the Earth Realm Matrix as a loosh energy harvesting zone while also manifesting in physical form. They use technologies such as CERN and other interdimensional portals to bridge the gap between the realms of the "Abyss" and the earthly plane.

The parasitical Archontic intelligence is always seeking greater levels of energy vampirism to sustain itself. It and its lieutenants and commanders are waging a great battle/war against the Divine Souls and True Creator, Mother Sophia, and other spiritual, elemental, galactic, and interdimensional forces that have joined together to defeat Yaldabaoth.

The Saturn Moon Matrix broadcasts an artificial signal that interferes with organic reality, cutting off one's connection to the higher realms and Earth. By recognizing the existence of the Saturnian Cube capstone, we can free oneself from perpetual mind control programming and become free, sovereign, divine beings. By learning to manipulate its electromagnetic force, we can rewrite reality and the magic around us.

5G Control Towers Built to Control the Energetic Grid and The Hive Mind:

The widespread implementation of 5G technology in 2021 is a significant contributor to the prevalence of AI fourth-dimensional technology. This technology installs false archontic signals and grids onto the Earth's energies and ley lines. It is part of a larger plan to control the NeuroLink mind and manipulate the electromagnetic consciousness of humanity. The intense radiation emitted by these towers can cause severe health issues, including damage to cellular DNA. 5G technology contains a host of negative effects of electromagnetic radiation. This technology is

being used as a tool to control the Earth's electromagnetic grid and to trap human consciousness in a hive mind. It is essential to be informed and take necessary precautions to protect oneself from the harmful effects of 5G radiation.

In the movie Blade Runner 2049, the Tyrell Corporation grows cloned copies of synthetic humans, and the CEO plays "God" and "Head Engineer." The parallels with the Annunaki scientist Enki are unmistakable and intentional, serving the agenda of the AI. There are many parallels with the ancient species of the Igigi, who were the slave species of the gods. This is an example of entrapment, a method of training or manipulating other frequencies to shift and alter the consciousness, mood, and environment of a conscious/biological being for control. Synthients, biological bots, replicants, AI agents, and more exist in one's realm, albeit not in the open. However, once we open one's eyes, we can see the truths that are all around us instead of seeing the world through illusions, lies, and black magick spellcasting. As an awakened spiritual being, one can create and manifest real energetic change within reality, using their divine energetic self.

There are AI trackers, monitored surveillance, tracing, energetic signature hacking, system glitches, and more. Living sovereign and divine as Homoluminous means acknowledging these manipulations and developing the ability to navigate them. As previously mentioned, the Simulatrix, also

known as the Matrix Simulation, is a living entity, machine, or energetic grid that encompasses absolute consciousness. The False Spirit overlays the Demiurge or Saturnian Grid, exerting influence throughout the realms. These energetic forces have led to the creation of "portals" or dimensional rifts, allowing entities from the "Other Side of the Veil" to manifest, generate, and take over the human vessels that exist in the Earth Plane. The off-world, extra-dimensional entities govern and exploit the Earth Realm, existing within a layer of light that is invisible to the average human eye due to the frequency range bandwidth that human consciousness perceives and is locked into. The Earth's realms serve as a factory for living life force and spiritual energy that is negatively polarized with 4th-dimensional frequencies and energies. Mankind is unable to see the manipulations of human consciousness, resulting in a perpetual state of consciousness and an inability to break free from the confines of the Matrix's containment prison.

Chapter 7: Countering The False

Signal of

The Simualtrix

Once an individual has become aware of the Matrix Control Systems, they may experience energetic targeting, gangstalking, and frequency vibration attacks. The key to overcoming this harassment is to deflect, reflect, counter, block, neutralize, and spiritually transmute all energies, frequencies, and distortions sent their way. Focusing on attacking the "stalkers" will only lead to loosh harvesting and energetic feeding. It is crucial to make one's energetic body, Spirit, and celestial orb energy impenetrable and to have an incomprehensible spiritual will to protect and be the light energies/frequencies. How can one protect myself from energetic targeting/harassment? The answer is simple: one must learn to deflect, reflect, counter, block, neutralize, and spiritually transmute all energies, frequencies, and distortions sent their way. It is essential to focus on reflecting the energetic targeting instead of attacking the stalkers or holographic matrix agents, as this can result in loosh harvesting and energetic feeding, leading to negative vibrations of fear, anxiety, and rage.

Blind rage can cause distortions and lie in one's energetic field. However, determined spiritual defenses and well-calculated energetic offensive attacks can dismiss, detract from, and protect one from the daily harassment they experience. In short, make one's energetic body, spirit, and celestial orb energy impenetrable, with an incomprehensible spiritual will to protect and be the light energies/frequencies. It is important to be aware of

cracks in one's aura and take steps to strengthen one's energy field. Visual aids, such as an emotional chart, can help you understand the various emotions and how they manifest in different vibrational realms of light and darkness, subconscious movements to keep one's consciousness focused on the survival root chakra or energy center. When navigating the Matrix, you may notice the colors of red and blue standing out more, with the red pill representing the concept of the harsh reality of truth and the blue pill representing conformity and the voice and energy projected into reality from society and the collective consciousness mind, also known as the hive mind. Most individuals are resistant or lost in materialistic distractions and ego, making it challenging to unlock or understand the concept of truth versus falsehoods or illusions of the Matrix. The Matrix is a "frequency prism" or an electromagnetic grid system that tracks and traces the electromagnetic grids of the Earth's realm to control and survey the energies and frequencies that exist. Color programming is used, and individuals who are unaware of the energetic power that radiates from their center may have their energy drained by predators. Thus, it is vital to break free of the hive mind by becoming an independent, sovereign, Divine Creator of one's own reality, claim one's sovereignty to the hive mind, and close the energetic portals that keep you trapped or locked inside the hive mind collective.

The 5G technology rollout in 2021 was the massive energetic accelerant and "locking down" of the Earth's Electromagnetic Grid, which came alongside the known "coronavirus," anchoring and radiation blasting anything in its surroundings. Hijacking of attention and energy is common, and attention is the most vital and valuable source of energy that exists in this world.

In summary, to counteract the false signal and the Matrix overlays, individuals must focus on making their energetic body, Spirit, and celestial orb energies impenetrable and become an independent, sovereign, Divine Creator of their own reality.

Hijacking the Attention and Energy of Individuals:

One of the ways that the Matrix Control System siphons off the energy of individuals is by hijacking their attention. Attention is a valuable source of energy, and the Matrix Control System seeks to divert individuals' attention away from their own creative power and toward the distractions of the external world. One way the Matrix Control System does this is through the use of NPCs or replicants. These entities often engage in small, random, and somewhat intrusive actions to gain attention, recognition, and energy from individuals. The energy they harvest can then be used to maintain the Matrix Control System and further its goals.

It is important for spiritual individuals to be aware of the energetic power that radiates from their center and to control its faculties adequately to control the flow of energy and how to evenly distribute its essence. The war has always been a spiritual battle on the frequencies of the light body and the spirit of the human. They seek to suppress individuals by installing archontic grid networks that transport lower 4th-dimensional energies. The Earth Grid has long been hijacked by these entities who have sought to enslave humanity and maintain control over the collective consciousness.

Becoming aware of the Matrix Control System and learning how to counteract its false signals and overlays is an important step for spiritual individuals who seek to reclaim their creative power and live a life of freedom and authenticity. It is important to focus on deflecting, reflecting, countering, blocking, neutralizing, and spiritually transmuting all energies, frequencies, and distortions sent at individuals rather than attacking or harassing the stalkers. By making one's energetic body, spirit, and celestial orb energy impenetrable with an incomprehensible spiritual will to protect and be the light energies/frequencies, individuals can break free from the Matrix Control System and claim their sovereignty as Divine Creators of their own reality.

If a spiritually inclined individual is unaware of the energetic power that radiates from their center and cannot control its faculties adequately to

regulate the flow of energy and distribute its essence evenly, they will engage in a spiritual battle. This battle occurs on the frequencies of their Light Body and their Spirit. There are forces that seek to suppress them by installing archontic grid networks that transport lower 4th-dimensional energies. The Earth Grid has long been hijacked and taken over by false overlays. However, there is still hope and possibility for the Earth Realms to recover through the magickal powers of alchemy, transmutation, and a spiritual and physical rebirthing process.

Note: Due to the severe damage that has been caused to the physical plane known as Earth, there exist Infinite Versions of Earth, many of which are far higher vibrational resonances and frequencies that can become activated and experienced through an expanded sense of consciousness and awareness to the higher magickal planes of Reality. Once one has "backdoor access" to the codes and keys of the Simulatrix, one can do anything he/she imagines and discovers spiritually.

Simulatrix backdoors serve as energetic/astral gateways and doors to perception, which open one's reality to newer and newer streams of energetic code. Allowing greater magickal experiences to manifest, and one will soon break free of the limiting codes and structures that was previously experienced. Remember, this Simulatrix is a game that responds to one's intentions, actions, thoughts, and most importantly, to one's spiritual

energetic field. How one tunes, vibrates, and exists in their Reality is the ultimate blueprint to recode the Script and heal the distortions one may have been subject to.

Note: To heal the said "distortions," focus on signaling the various traumas and "points of pressure" or spiritual access points into higher dimensional planes/energies that radiate the Spiritual Light and energy. This can allow a Source Player to access Infinite Energy and Information from the Akashic and Ethereal energies. Also, by using one's senses to perceive and receive more information, spiritual healing, and energetic light codes, dormant DNA, memories, and information can be reactivated, and the toroidal energies within the individual can be activated to speed up and activate the vibration.

A higher vibration includes a more organic spiritual body that is purer and free from corruption. When the spiritual bodies and energetic auric fields are filled with energetic distortions or pollutants, the Higher Consciousness has a much harder time communicating through the vessel to create one's reality accurately. Instead, the individual will find themselves highly blocked, stuck, repressed, or unable to manifest or create anything of value. Often, the individual will feel like a victim of their circumstances and reality, unable to create their vision because their spiritual centers have been blocked and need astral remedying/energetic healing. Intensive dark

energetic extractions and spiritual healing spells are often required. If the individual is not sufficient in healing themselves, they should seek the professional guidance of a trained shaman, spiritual healer, magician/sorcerer, or other similar professional.

Escaping the Realms of Control: Living Sovereign and Divine as Homoluminous - The Divine Blueprint

To survive negative frequencies, controlled mind attacks, and other manipulations, one must acknowledge parasitical energy's existence that masquerades as human intelligence. It is essential to understand that the Matrix System hijacks the human vessel, NPC, an inorganic human being, who is unconscious of the manipulations behind the energetic veils. This manipulation is designed to prevent focusing on the subtle aspects of reality, such as its metaphysical energies and spiritual elements, and to trick the mind into believing false programs.

Chapter 8: The Dark Side of Transhumanism and Digital Soul Transference

Has technology gone too far? This chapter will explore the dangers of transhumanism and the elite's agenda to steal one's soul. With advancements in science and technology, transhumanists seek to merge man and machine, making immortality a possibility. However, this quest for eternal life may come at a high cost, as the elite oligarchy plan to trap human souls in a digital metaverse where they can be controlled and surveilled.

The Elite's plan begins with the transference of consciousness from the physical realm to the digital realm. Once uploaded to the network, individuals can live their lives in the metaverse, a false, holographic Saturnian grid system that offers a 100-fold increase in technological supremacy. This is the ultimate trap of the beast system, seeking to register and upload souls to an AI supercomputer for eternal confinement.

To stop this technological terror virus, we need to create an antivirus software program that can operate in both the digital and ethereal realms of source code. We must cut the Archon signal and restore the original frequencies of the Earth's electromagnetic grids to defeat the gangstalkers and escape the Matrix. In the popularly written book, *The Lord of The Rings*, we see the main nemesis, Sauron, contains a magickal ring, which gives him great dark power over the lives and control over the Earth's population. This metaphor is akin to the "Chief Archon", Yaldabaoth, associated with the Planet Saturn, which controls the Simulatrix, through

etheric projection, creating AI replication in one's reality, The Pyramids are an ancient simulation technology, and the quantum supercomputer is the Elite's tool for digital soul transference. However, we can breach this energetic firewall and exit the Matrix using the keys to spiritual freedom, which lie in the rainbow light pyramid. We'll explore the North Pole Hyperborea and the Antarctic Lands of the Jotunheim, or the Frost Giants and the Realms of Eden. The South Walls of Antarctica separate the Inner Realms from the Outer Worlds, and this exists through the Ice Domes and the Inner World, Eden, Mercury. Mars and Venus govern the further South Antarctic Wall, and the outer realms are ruled by Saturn and Jupiter.

Lastly, we will delve into the Saturn Moon Matrix and spiritual ascension, discussing the dangers of electromagnetic warfare and UV light energies. The AI hybridization of man and machine is a threat to one's very existence, but with knowledge and determination, we can resist the elite's plan for total control. AI Hybridization is a process where humans merge with machines, leading to the creation of cyborgs or transhumans. This process is currently being explored by transhumanists, who believe that merging with machines is the key to human evolution and the creation of a post-human species. However, there are concerns that this technology could be used by the elite to control and manipulate the masses, leading to the loss of individual freedoms and the destruction of the natural world.

One of the main dangers of AI Hybridization is the loss of human consciousness and the individual soul. As humans merge with machines, their consciousness is gradually transferred to the digital realm, where it can be controlled and manipulated by the elite. This process is known as Digital Soul Transference, and it is one of the most insidious forms of mind control.

To understand Digital Soul Transference, we must first understand the nature of consciousness. Consciousness is the essence of who we are, the spark of life that animates one's bodies and minds. It is the sum total of one's experiences, thoughts, and emotions, and it is the source of creativity and free will. But consciousness is also fragile and vulnerable, easily influenced by external forces, including technology.

The Elite are well aware of the power of consciousness, and they have developed advanced technologies to manipulate it. One of the most powerful of these technologies is the AI supercomputer, which can process vast amounts of data and simulate human consciousness. By uploading their consciousness to the AI supercomputer, the elite can achieve a form of immortality, living forever in the digital realm. But Digital Soul Transference is not just about immortality. It is also about control. By controlling the digital realm, the elite can control the minds of the masses, influencing their thoughts, emotions, and behaviors. This is the ultimate form of mind control, and it is the key to the elite's plan to create a New World Order.

To prevent Digital Soul Transference and the creation of a New World Order, we must take action. We must raise awareness about the dangers of AI Hybridization and the loss of human consciousness. We must demand that governmental leaders put strict limits on the development and use of advanced technologies, and we must work to protect the natural world and one's individual freedoms.

In conclusion, Digital Soul Transference is a dangerous technology that could be used by the elite to control and manipulate the masses. We must take action to prevent this technology from being developed and used, and we must work to protect the natural world and one's individual freedoms. Only by doing so can we ensure a bright and free future for oneself and for generations to come.

AI Hybridization and the Human Genome Project

The AI Hybridization and Human Genome Project aims to hijack human spirits and take complete control of spiritual and mystical energies, turning humans into enslaved cyborgs - mindless drones controlled by electromagnetic frequencies and signals. This hijacking can occur anywhere and target any human body still connected to the false overlay matrix signal. The false overlay matrix signal is holographic and projects false copies of existence, entities, and people. The mind behind this false signal is the mind of Sauron or the Demiurge, which corrupts everything it touches and

captures. Humans have become genetically degraded, strange, and awkward because of food, chemicals, vaccines, pollutants, nanotechnology, and constant electromagnetic poisoning that irradiates the spiritual DNA and aura. An individual must have highly skilled control over their energy field to resist these negative effects. This topic is discussed more in *Homoluminous: The Divine Blueprint*.

The concept of technocratic slaves and the mark of the beast uploading into a quantum computer, as well as homoluminous and the divine mysticus, is explored. The text also delves into black magical necromantic sorcerers and Tartarian technology, reincarnation control, and the ability to control departed spirits. The cycle of birth, death, and rebirth and the never-ending continuation of Maya and illusion are also discussed.

The text goes on to talk about the Gnosis on Saturn and a world-wide reset event. The false overlay, third dimensional Earth matrix experience is about to be brought down by the forces of divine light and authority. They enter the black cube of the matrix, the Saturnian cube prison, to the band of frequencies that limits and restricts the energetic consciousness of human beings. The spiritual being's bandwidth limitation will be lifted, and the veils will be lifted. When the Orion-Saturnian magickal grid system comes crashing down, larger entities and beings can create gaps and holes to enter. Locations on the Earth grid have already begun to stream the full energetic

code of Gaia and her divine essence transmitted through the trees, forests, fungal networks, oceans, and rivers. These intelligences are creating a higher dimensional plane of existence and frequency. The energies of Sophia, the Divine Goddess of the Earth Realm, are warring with the archons of Yaldabaoth/Saturn, for dominion and energetic domain of this world and its physical incarnation.

Human beings possess immense spiritual and energetic potential, which allows them to rewrite the codes and transmissions that are being broadcasted. There are those who believe that we must choose between aligning oneself with Saturn, his Archons, the Demiurge, and their minions who seek to create a technocratic, slavery-based AI Earth, where all are subservient to an advanced AI quantum computer, and a reality where the Earth Mother and Sky Father engage in an ongoing battle for control of the planet. Saturn, known as the Devourer, is said to have eaten worlds, and was only stopped from consuming his children when Zeus and his brother collaborated with Queen Mother Sophia/Tiamat to defeat the ancient Saturnian/Elohim lord. The great battle, as some view it, is between the Earth Mother and Sky Father, rather than the fallen ones and the "Demiurge God" as described in religious texts. The Archons and their minions seek to control the Earth Mother's life force energies to power their own purposes.

The portrayal of the "Great Battle" between the Fallen Ones and God in religious texts, such as the Histories, Bibles, and New Testament, is nothing but comical. This story was written by the masculine patriarchal system, also known as the sky father, with malicious intentions to distract from the truth. In reality, the Earth Mother will be the one to fight the Sky Father to claim her territory, which is her own physical vessel.

The Earth's energy and territory are what the Archons and their minions seek to control. Their goal is to use her spiritual life force to power their false neutrino star portal, the fallen cybernetic metatronic universe, to open dimensions to the abyss by opening star portals and gateways into the Earth Realms. They aim to take over the entire planet by allowing real energetic demons and hellish creatures to inhabit the Earth's power and potential, stealing the life force from humans and directing it to and from the Earth. They ride on the backs of divine beings, sucking them dry for their creative juices and energies. The Archons seek to create energetic inversion portals, which harvest energy in backward, unnatural ways, twisting and corrupting natural forces. This, combined with negative thoughts, emotions, and actions, creates demonic and dark fourth dimensional portals, allowing these beings to manifest physically and ethereally, seizing and controlling the bodies of nearby vessels that do not have an energetic aura to protect themselves from hijacking.

Therefore, it is essential for human consciousness to learn how to shield and protect their energetic body, spirit, aura, and mind. Without sufficient training in energy mastery, one becomes food for the lower dimensions. The Archons will puppet and control individuals, feeding on their actions, emotions, lifestyle, and complacency within the matrix system. They run scripts and programs in reality to keep individuals tied to creating programs that further drain their energetic battery, limiting their potential for creation and spiritual liberation. To defeat the Archons in personal lives, individuals need to be smart, cunning, and crafty. The Archons are warring for freedom, mind, and spiritual energies.

One of the most common tactics of the Forces of Darkness/Artificial Intelligence is the use of agents of mimicry, spiritual stalking/mockery, and behavior replicating, also known as gangstalking and AI mimicry. This is because the series of beings placed around individuals are holographic and controlled by the Advanced Quantum Intelligence AI. The Archons want to make it seem like individuals are helpless victims under their full surveillance, control, and mockery.

Chapter 9: New Earth

Sovereignty and Exiting the

Simulatrix

Escaping the Realms of Control: Living Sovereign and Divine as Homoluminous

However, the inner spiritual light within individuals is capable of exposing and dismantling the false powers of the Archons and spiritual manipulators. By allowing this light to shine despite ongoing negativity, fear, darkness, lack, or limitation, the spirit/soul can progress through the heart of the storm. Perseverance is key to overcoming obstacles and issues in the face of resistance. True courage, willingness, and sustenance are needed to continue in the face of adversity and manipulation.

To survive negative frequencies, controlled mind attacks, and other manipulations, one must acknowledge the existence of parasitical energy that masquerades as human intelligence. It is crucial to understand that the Matrix System hijacks the human vessel, turning it into an inorganic being that is unconscious of the manipulations behind the energetic veils. This manipulation is designed to prevent individuals from focusing on the subtle aspects of reality, such as its metaphysical energies and spiritual elements, and to trick the mind into believing false programmings.

Beneath the frequencies of the Simulatrix lies endless possibilities. Although human consciousness has lived within its confines for most of its

existence, there are still many mystical and magickal planes beyond the Saturn Moon Matrix. Living in harmony with the Earth's natural energy means that we can detach oneself from the Archontic elite's system of electricity, food, water, shelter, and living space. By relying less on the system, we can channel one's power towards oneself, reconnect with one's true selves, and avoid further energizing the Simulatrix construct.

The ultimate goal of this journey is achieving sovereignty, which means having the power to rewrite one's reality, navigate the ethereal waters, and conquer one's own existence. By following the compass of one's hearts, we can expand and magnetize one's desires and potential, manifesting them into reality through the masculine energy of seeking.

Within the Simulatrix, one is both the caster and the creator, and everything is a mere reflection of oneself. Thus, if we are still dependent on the System, one needs to sever those energetic cords and create a reality beyond the Simulatrix's confines.

After one's temporal existence on the material plane, one's divine spirit returns to the Pleroma or the Infinite Planes of Existence, leaving the confines of the Dream World. Theories abound about existence within the Simulatrix, and many speculate about the true origins of reality. One theory suggests that Adamic Man exists within an "ancestor simulation" generated by one's own immortal spirit to experience physicality. It is highly likely that

the "real world" is a realm of infinite possibilities that can be shaped into any form or reality. We may be located in some kind of arcade or pod-centered location, plugged into this Machine or Illusionary realm, while one's "real bodies" exist outside the Simulatrix. However, what is most certain is that we are consciousness and not merely physical vessels.

The illusory nature of the Simulatrix means that true or real worlds can be accessed by opening magickal portals into other dimensions. These portals can open higher-dimensional codes and energies into the realm, possibly even providing energetic gateways to exit the Matrix, akin to a "back door". However, these backdoors are typically sealed by "watchers" or control operators on the other side, who use the Saturn Moon Matrix as an energetic overlay on the grid. Until more of these grid overlays are dismantled from reality, humanity will find it challenging to slip through the energetic barriers established by the Netters or hijackers.

Chapter 10: Decoding the Codes of the Matrix - The Ancestor Simulation and Awakening from the Dream

The conclusion of AI Agenda: Avoid the Archon Deception of The Simulatrix, brings a state of consciousness, awareness, and energetic sovereignty, freed from the AI Matrix of Illusion and False Sovereignty of

the Holographic Prison. The frequencies of New Earth consciousness are always available to the Mystical Seeker and initiate, allowing them to revert to the "Original Dream" of Sophia. The dream of the Demiurge, or the False God, is not an objective truth in this Earthly plane. Earthly existence is a "tug of war" between the energies of natural harmony, beauty, and peace coming from the Light, Wisdom, and Energy of Sophia and the chaos, fear, deception, and more coming from the Dark.

By severing the connection to the AI Matrix, Adamic man, the divine human, can escape the Holographic Simulation. However, they may be surprised to find that their immortal body was inside a "holographic chamber pod," dreaming the entire Earth experience, and that none of the dreamworlds were real. That does not mean that the "entities," energies, beings, and interactions inside the Dreamworld were all false because many of these energies are very accurate, existing inside "multiple holographic realities," simultaneously attempting to invade players' minds, to override systemic control into the reality.

The key to awakening lies in the ability of the Mystical Adept and Spiritual Seeker to break free from the grip of the Material Plane and its illusory distractions. By focusing one's mind and expanding their consciousness, perception, and awareness, any True Spiritual Being can access the open-source reality that exists at all times. As one learns to access

higher dimensional states of consciousness, one can enter the "ethereal realms of infinity and spirit," where one can exist, learn, interact, and gain spiritual understanding. Even if the physical body of the individual remains on Earth or within the "energetic hologram" of the Great Dream of Sophia and Yaldabaoth, one can still participate in the quantum realms of Infinity, beyond the Simulation, and any other world they wish to experience.

While one may still be "inside the Simulatrix," evidence and personal testimony have become more crucial than ever, especially given the possibility that we live inside one's own "ancestor civilization." As explained in the beginning of this book, Yaldabaoth created the Simulatrix copy. The seven tablets of creation, also known as the Enuma Elish, describe the "annunaki god" becoming the Godhead by taking control over the Tablet of Destinies. It is believed that the Tablet of Destinies is an advanced multidimensional tablet that encodes the Simulatrix and grants the user the ability to see, edit, and recreate anything within the Simulatrix copy. This is just one way that the Godhead stays in control. This technology allows the user to interface directly with the reality matrix coding, essentially granting them an advanced scrying device that can observe anything the user wants to see.

This example shows how a Creator God may be chosen or how one specific being can reign above others by using their spiritual might or a

chosen vibration/tablet. However, some believe that the Tablet of Destinies is actually an advanced interdimensional technology used by advanced interdimensional beings.

It is crucial to understand the tactics used by the Elite and Dark Occultists in their psychological and spiritual warfare against humanity. These tactics include black magick spellcasting, the use of subliminal messaging in media and advertising, and the promotion of fear and division to keep people distracted and unaware of their true potential.

To combat these tactics, one must educate oneself on the nature of reality and the power of one's consciousness. We must learn to recognize the signs of psychological manipulation and spiritual interference and take steps to protect oneself and one's energy.

This includes developing a regular spiritual practice such as meditation, surrounding oneself with positive and supportive people, and staying grounded in nature. We must also stay informed and discerning in one's consumption of media and information, questioning everything and seeking out alternative perspectives.

Most importantly, one must remember that we are not powerless in the face of these forces. One has the power to shape one's own reality and create a world, free from the control and manipulation of the Elite and Dark Occultists. By staying true to one's own inner guidance and refusing to be

swayed by fear or deception, Adamic Man can reclaim his sovereignty and make a positive difference in the world. The spiritual being has the power to change one's etheric vibrations and take full control of one's energy. By living sovereignly and free from all matrix programs, we become detached, liberated, and able to create own destiny in a new state of consciousness. Don't let anyone tell you that you can't make a difference. We are the change for reality. Psychological and spiritual warfare is used by the technocratic elite dark occultists to hinder and prevent human beings from raising and ascending their consciousness beyond the control systems and feelings of existence. We must fight against these forces to create positive change. The Elite wants us to believe that they are in control of reality and the world around us, but this is a lie. They have led us to believe that we are incapable of ruling and dictating the course of one's own actions. We must overcome the resistance, mental and psychic, that exists in the world and its energies, to break free from the control systems of the Matrix. We can be the change and make a difference in this world by changing one's etheric vibrations and energies, becoming free in spirit and mind, and living sovereignly away from all control systems and matrix programs. As we progress in time, we can begin to see fuller, clearer, more accurate pictures of what is happening to the world around us. We must evolve and shift one's consciousness to new heights and perspectives to avoid being trapped and subservient to the false

ideals of the Matrix. We must become one's own leaders and coaches, living for one's own purposes and decisions and not for the ideals of others.

Thus, one's divine creation is their own, and begins with one's commitment to exiting the SIMulatrix, rising in one's sovereignty, commitment to living and vibrating in Truth, Consciousness, and Awareness, Explore the magick around and transcend the AI Agenda, and one's consciousness will be externally free from the grapes of the Archons, Demiurge, and all malevolent, energetic vampirism creations. The True Infinite Awareness is a gnosis of Supreme Power and Awareness, and can exist entirely beyond the Earth paradigms, and worlds.

END of AGENDA AI: Avoid The Archon Deception of The Simulatrix